

## Summary

<b>Production Name</b>	IRE1 $\alpha$ / $\beta$ Rabbit Polyclonal Antibody
<b>Description</b>	Rabbit Polyclonal Antibody
<b>Host</b>	Rabbit
<b>Application</b>	IHC,IF,ELISA
<b>Reactivity</b>	Human,Mouse

## Performance

<b>Conjugation</b>	Unconjugated
<b>Modification</b>	Unmodified
<b>Isotype</b>	IgG
<b>Clonality</b>	Polyclonal
<b>Form</b>	Liquid
<b>Storage</b>	Store at 4°C short term. Aliquot and store at -20°C long term. Avoid freeze/thaw cycles.
<b>Buffer</b>	Liquid in PBS containing 50% glycerol, 0.5% BSA and 0.02% New type preservative N.
<b>Purification</b>	Affinity purification

## Immunogen

<b>Gene Name</b>	ERN2
<b>Alternative Names</b>	ERN2; IRE2; Serine/threonine-protein kinase/endoribonuclease IRE2; Endoplasmic reticulum-to-nucleus signaling 2; Inositol-requiring protein 2; hIRE2p; Ire1-beta; IRE1b
<b>Gene ID</b>	10595.0
<b>SwissProt ID</b>	Q76MJ5.The antiserum was produced against synthesized peptide derived from human ERN2. AA range:841-890

## Application

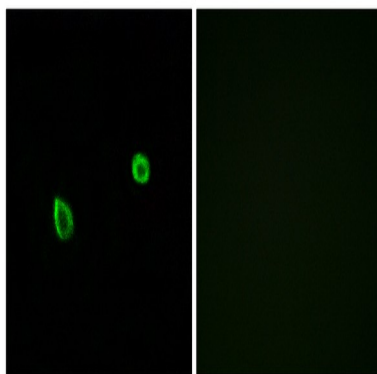
<b>Dilution Ratio</b>	IHC 1:100 - 1:300. IF 1:200 - 1:1000. ELISA: 1:10000. Not yet tested in other applications.
<b>Molecular Weight</b>	

## Background

catalytic activity:ATP + a protein = ADP + a phosphoprotein.,cofactor:Magnesium.,enzyme regulation:The kinase domain is activated by trans-autophosphorylation. Kinase activity is required for activation of the endoribonuclease domain.,function:Induces translational repression through 28S ribosomal RNA cleavage in response to ER stress. Pro-apoptotic. Appears to play no role in the unfolded-protein response, unlike closely related proteins.,PTM:Autophosphorylated.,similarity:Belongs to the protein kinase superfamily. Ser/Thr protein kinase family.,similarity:Contains 1 KEN domain.,similarity:Contains 1 protein kinase domain.,catalytic activity:ATP + a protein = ADP + a phosphoprotein.,cofactor:Magnesium.,enzyme regulation:The kinase domain is activated by trans-autophosphorylation. Kinase activity is required for activation of the endoribonuclease domain.,function:Induces translational repression through 28S ribosomal RNA cleavage in response to ER stress. Pro-apoptotic. Appears to play no role in the unfolded-protein response, unlike closely related proteins.,PTM:Autophosphorylated.,similarity:Belongs to the protein kinase superfamily. Ser/Thr protein kinase family.,similarity:Contains 1 KEN domain.,similarity:Contains 1 protein kinase domain.,

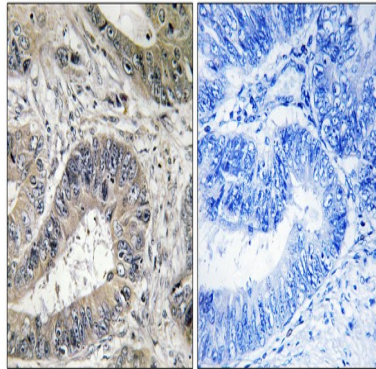
## Research Area

## Image Data



Immunofluorescence analysis of A549 cells, using ERN2 Antibody. The picture on the right is blocked with the synthesized peptide.

**Product Name: IRE1 $\alpha$ / $\beta$  Rabbit Polyclonal Antibody**  
**Catalog #: APRab12734**



Immunohistochemistry analysis of paraffin-embedded human colon carcinoma tissue, using ERN2 Antibody. The picture on the right is blocked with the synthesized peptide.

**Note**

For research use only.