
Summary

Production Name	Inhibin β -A Rabbit Polyclonal Antibody
Description	Rabbit Polyclonal Antibody
Host	Rabbit
Application	WB,IHC,IF,ELISA
Reactivity	Human,Mouse,Rat

Performance

Conjugation	Unconjugated
Modification	Unmodified
Isotype	IgG
Clonality	Polyclonal
Form	Liquid
Storage	Store at 4°C short term. Aliquot and store at -20°C long term. Avoid freeze/thaw cycles.
Buffer	Liquid in PBS containing 50% glycerol, 0.5% BSA and 0.02% New type preservative N.
Purification	Affinity purification

Immunogen

Gene Name	INHBA
Alternative Names	INHBA; Inhibin beta A chain; Activin beta-A chain; Erythroid differentiation protein; EDF
Gene ID	3624.0
SwissProt ID	P08476.The antiserum was produced against synthesized peptide derived from the C-terminal region of human INHBA. AA range:377-426

Application

Dilution Ratio	WB 1:500 - 1:2000. IHC-p: 1:100-1:300. ELISA: 1:20000.. IF 1:50-200
Molecular Weight	52kD

Background

Product Name: Inhibin β -A Rabbit Polyclonal Antibody
Catalog #: APRab12613

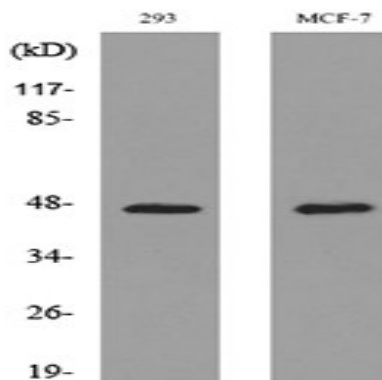


This gene encodes a member of the TGF-beta (transforming growth factor-beta) superfamily of proteins. The encoded preproprotein is proteolytically processed to generate a subunit of the dimeric activin and inhibin protein complexes. These complexes activate and inhibit, respectively, follicle stimulating hormone secretion from the pituitary gland. The encoded protein also plays a role in eye, tooth and testis development. Elevated expression of this gene may be associated with cancer cachexia in human patients. [provided by RefSeq, Aug 2016],function:Inhibins and activins inhibit and activate, respectively, the secretion of follitropin by the pituitary gland. Inhibins/activins are involved in regulating a number of diverse functions such as hypothalamic and pituitary hormone secretion, gonadal hormone secretion, germ cell development and maturation, erythroid differentiation, insulin secretion, nerve cell survival, embryonic axial development or bone growth, depending on their subunit composition. Inhibins appear to oppose the functions of activins.,online information:Activin entry,similarity:Belongs to the TGF-beta family.,subunit:Dimeric, linked by one or more disulfide bonds. Inhibin A is a dimer of alpha and beta-A. Inhibin B is a dimer of alpha and beta-B. Activin A is a homodimer of beta-A. Activin B is a homodimer of beta-B. Activin AB is a dimer of beta-A and beta-B.,

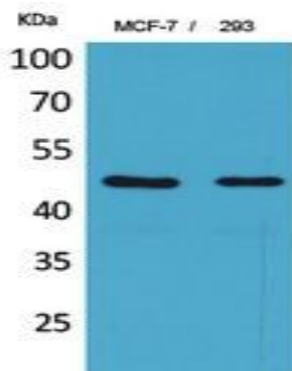
Research Area

Cytokine-cytokine receptor interaction;TGF-beta;

Image Data

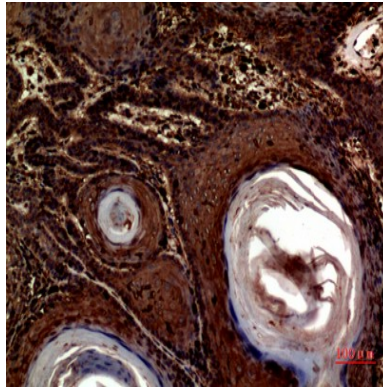


Western blot analysis of lysate from 293, MCF-7 cells, using INHBA Antibody.

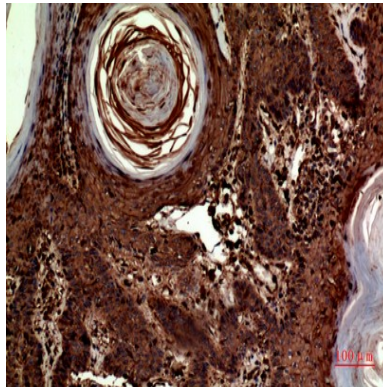


Western Blot analysis of MCF-7, 293 cells using Inhibin β -A Polyclonal Antibody.. Secondary antibody was diluted at 1:20000

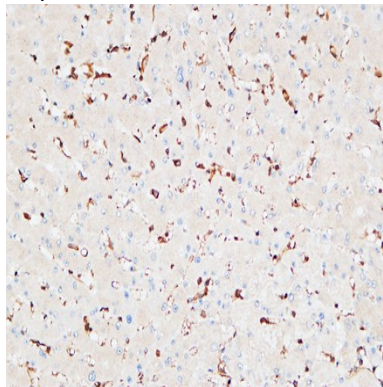
Product Name: Inhibin β -A Rabbit Polyclonal Antibody
Catalog #: APRab12613



Immunohistochemical analysis of paraffin-embedded human-skin, antibody was diluted at 1:100

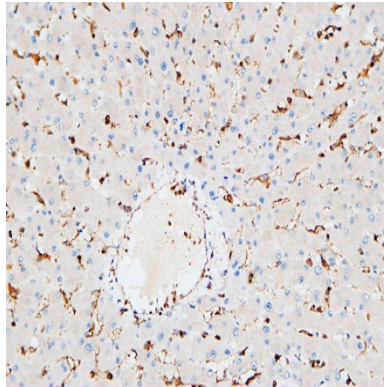


Immunohistochemical analysis of paraffin-embedded human-skin, antibody was diluted at 1:100

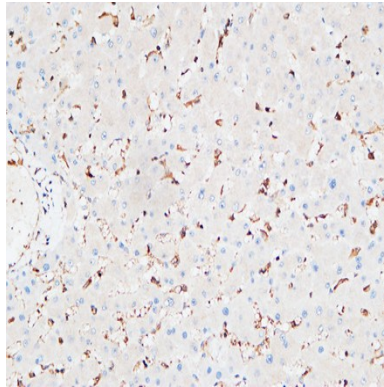


Immunohistochemical analysis of paraffin-embedded Human liver. 1, Antibody was diluted at 1:200 (4°overnight) . 2, High-pressure and temperature EDTA, pH8.0 was used for antigen retrieval. 3,Secondary antibody was diluted at 1:200 (room temperature, 30min) .

Product Name: Inhibin β -A Rabbit Polyclonal Antibody
Catalog #: APRab12613



Immunohistochemical analysis of paraffin-embedded Human liver. 1, Antibody was diluted at 1:200 (4°,overnight) . 2, High-pressure and temperature EDTA, pH8.0 was used for antigen retrieval. 3,Secondary antibody was diluted at 1:200 (room temperature, 30min) .



Immunohistochemical analysis of paraffin-embedded Human liver. 1, Antibody was diluted at 1:200 (4°,overnight) . 2, High-pressure and temperature EDTA, pH8.0 was used for antigen retrieval. 3,Secondary antibody was diluted at 1:200 (room temperature, 30min) .

Note

For research use only.