

Summary

Production Name	HSP90 β Rabbit Polyclonal Antibody
Description	Rabbit Polyclonal Antibody
Host	Rabbit
Application	WB,IHC,IP,IF,ELISA
Reactivity	Human,Mouse,Rat,Monkey

Performance

Conjugation	Unconjugated
Modification	Unmodified
Isotype	IgG
Clonality	Polyclonal
Form	Liquid
Storage	Store at 4°C short term. Aliquot and store at -20°C long term. Avoid freeze/thaw cycles.
Buffer	Liquid in PBS containing 50% glycerol, 0.5% BSA and 0.02% New type preservative N.
Purification	Affinity purification

Immunogen

Gene Name	HSP90AB1
Alternative Names	HSP90AB1; HSP90B; HSPC2; HSPCB; Heat shock protein HSP 90-beta; HSP 90; Heat shock 84 kDa; HSP 84; HSP84
Gene ID	3326.0
SwissProt ID	P08238.The antiserum was produced against synthesized peptide derived from human HSP90B. AA range:226-275

Application

Dilution Ratio	WB 1:500 - 1:2000. IHC 1:100 - 1:300. Immunoprecipitation: 2-5 ug:mg lysate. IF 1:200 - 1:1000. ELISA: 1:40000. Not yet tested in other applications.
Molecular Weight	90kD

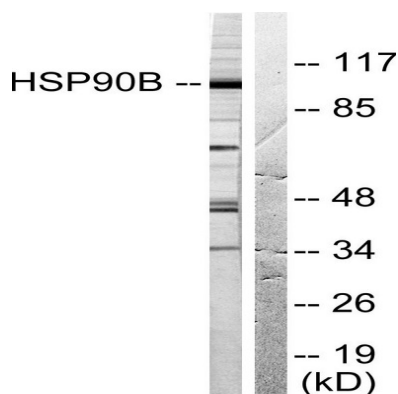
Background

This gene encodes a member of the heat shock protein 90 family; these proteins are involved in signal transduction, protein folding and degradation and morphological evolution. This gene encodes the constitutive form of the cytosolic 90 kDa heat-shock protein and is thought to play a role in gastric apoptosis and inflammation. Alternative splicing results in multiple transcript variants. Pseudogenes have been identified on multiple chromosomes. [provided by RefSeq, Dec 2012],function:Molecular chaperone. Has ATPase activity.,PTM:Phosphorylated upon DNA damage, probably by ATM or ATR.,similarity:Belongs to the heat shock protein 90 family.,subcellular location:Identified by mass spectrometry in melanosome fractions from stage I to stage IV.,subunit:Homodimer. Interacts with TP53/p53 (By similarity). Interacts with UNC45A. Binding to UNC45A involves 2 UNC45A monomers per HSP90AB1 dimer.,

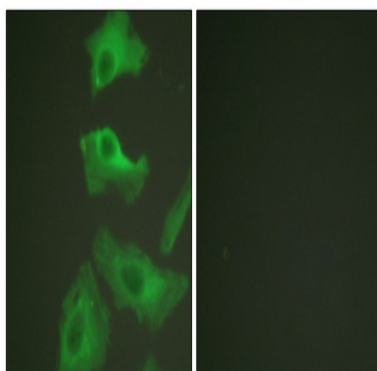
Research Area

PI3K/Akt; Protein_Acetylation

Image Data

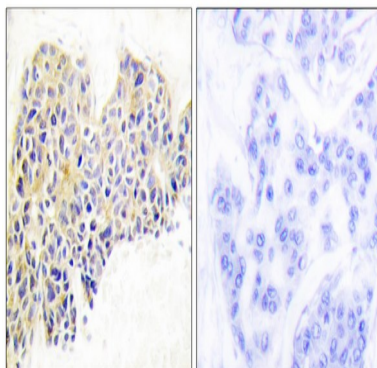


Western blot analysis of HSP90B Antibody. The lane on the right is blocked with the HSP90B peptide.

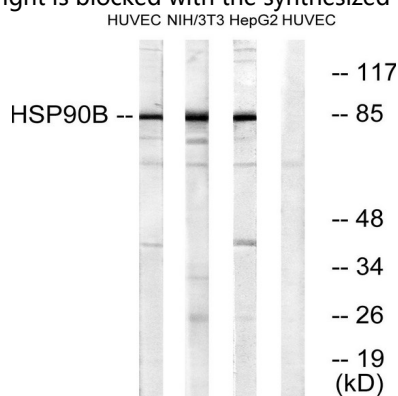


Immunofluorescence analysis of HeLa cells, using HSP90B Antibody. The picture on the right is blocked with the synthesized peptide.

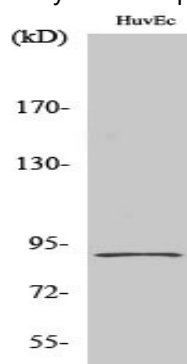
Product Name: HSP90 β Rabbit Polyclonal Antibody
Catalog #: APRab12263



Immunohistochemistry analysis of paraffin-embedded human breast carcinoma tissue, using HSP90B Antibody. The picture on the right is blocked with the synthesized peptide.

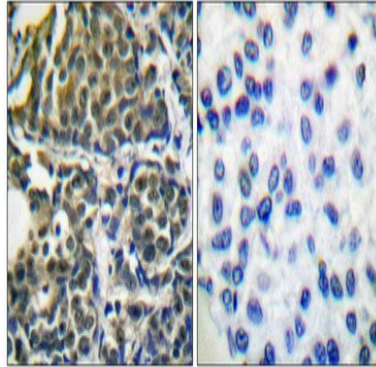


Western blot analysis of lysates from HUVEC/NIH/3T3/HepG2, using HSP90B Antibody. The lane on the right is blocked with the synthesized peptide.



Western Blot analysis of various cells using HSP90 β Polyclonal Antibody diluted at 1: 2000

Product Name: HSP90 β Rabbit Polyclonal Antibody
Catalog #: APRab12263



Immunohistochemical analysis of paraffin-embedded Human breast cancer. Antibody was diluted at 1:100 (4°,overnight) . High-pressure and temperature Tris-EDTA,pH8.0 was used for antigen retrieval. Negative contrl (right) obtaned from antibody was pre-absorbed by immunogen peptide.

Note

For research use only.