

---

## Summary

<b>Production Name</b>	GPRC5D Rabbit Polyclonal Antibody
<b>Description</b>	Rabbit Polyclonal Antibody
<b>Host</b>	Rabbit
<b>Application</b>	IF, WB, ELISA
<b>Reactivity</b>	Human, Mouse

## Performance

<b>Conjugation</b>	Unconjugated
<b>Modification</b>	Unmodified
<b>Isotype</b>	IgG
<b>Clonality</b>	Polyclonal
<b>Form</b>	Liquid
<b>Storage</b>	Store at 4°C short term. Aliquot and store at -20°C long term. Avoid freeze/thaw cycles.
<b>Buffer</b>	Liquid in PBS containing 50% glycerol, 0.5% BSA and 0.02% New type preservative N.
<b>Purification</b>	Affinity purification

## Immunogen

<b>Gene Name</b>	GPRC5D
<b>Alternative Names</b>	GPRC5D; G-protein coupled receptor family C group 5 member D
<b>Gene ID</b>	55507.0
<b>SwissProt ID</b>	Q9NZD1. The antiserum was produced against synthesized peptide derived from human GPRC5D. AA range: 271-320

## Application

<b>Dilution Ratio</b>	WB 1:500 - 1:2000. IF 1:200 - 1:1000. ELISA: 1:5000. Not yet tested in other applications.
<b>Molecular Weight</b>	43kD

## Background

---

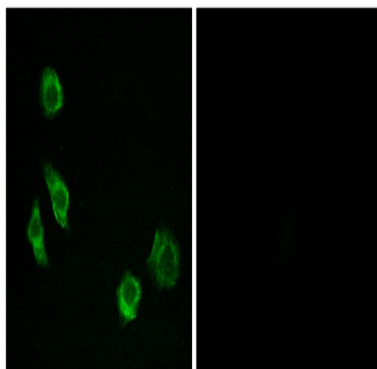
**Product Name: GPRC5D Rabbit Polyclonal Antibody**  
**Catalog #: APRab11715**



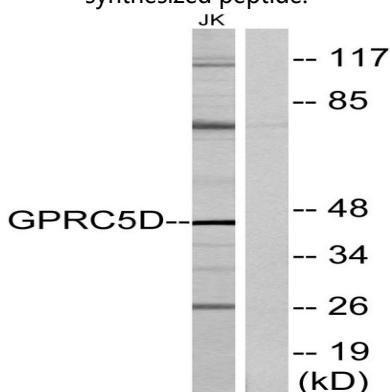
The protein encoded by this gene is a member of the G protein-coupled receptor family; however, the specific function of this gene has not yet been determined. [provided by RefSeq, Jul 2008],function:Unknown.,similarity:Belongs to the G-protein coupled receptor 3 family.,tissue specificity:Widely expressed in the peripheral system. Expression pattern is high in pancreas, medium in kidney, small intestine, spleen and testis, low in lung, colon, leukocyte, prostate and thymus and not detectable in brain, heart, liver, placenta, skeletal muscle and ovary.,

## Research Area

## Image Data

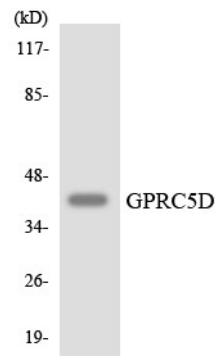


Immunofluorescence analysis of MCF7 cells, using GPRC5D Antibody. The picture on the right is blocked with the synthesized peptide.



Western blot analysis of lysates from Jurkat cells, using GPRC5D Antibody. The lane on the right is blocked with the synthesized peptide.

**Product Name: GPRC5D Rabbit Polyclonal Antibody**  
**Catalog #: APRab11715**



Western blot analysis of the lysates from HUVECcells using GPRC5D antibody.

**Note**

For research use only.