

---

## Summary

<b>Production Name</b>	GPR25 Rabbit Polyclonal Antibody
<b>Description</b>	Rabbit Polyclonal Antibody
<b>Host</b>	Rabbit
<b>Application</b>	WB,ELISA
<b>Reactivity</b>	Human,Rat,Mouse

## Performance

<b>Conjugation</b>	Unconjugated
<b>Modification</b>	Unmodified
<b>Isotype</b>	IgG
<b>Clonality</b>	Polyclonal
<b>Form</b>	Liquid
<b>Storage</b>	Store at 4°C short term. Aliquot and store at -20°C long term. Avoid freeze/thaw cycles.
<b>Buffer</b>	Liquid in PBS containing 50% glycerol, 0.5% BSA and 0.02% New type preservative N.
<b>Purification</b>	Affinity purification

## Immunogen

<b>Gene Name</b>	GPR25
<b>Alternative Names</b>	GPR25; Probable G-protein coupled receptor 25
<b>Gene ID</b>	2848.0
<b>SwissProt ID</b>	O00155.The antiserum was produced against synthesized peptide derived from human GPR25. AA range:193-242

## Application

<b>Dilution Ratio</b>	WB 1:500 - 1:2000. ELISA: 1:5000.
<b>Molecular Weight</b>	38kD

## Background

---

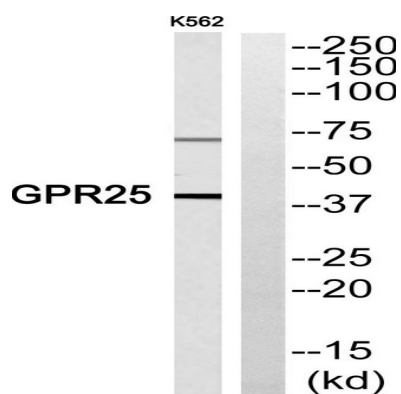
**Product Name: GPR25 Rabbit Polyclonal Antibody**  
**Catalog #: APRab11669**



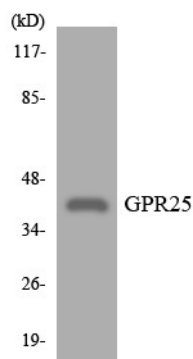
This gene is intronless and encodes a member of the G-protein coupled receptor 1 family. G-protein coupled receptors are membrane proteins which activate signaling cascades as a response to extracellular stress. This gene has been linked to arterial stiffness. [provided by RefSeq, Nov 2012],function:Orphan receptor.,similarity:Belongs to the G-protein coupled receptor 1 family.,

## Research Area

## Image Data



Western blot analysis of GPR25 Antibody. The lane on the right is blocked with the GPR25 peptide.



Western blot analysis of the lysates from K562 cells using GPR25 antibody.

## Note

For research use only.