
Summary

Production Name	GPR149 Rabbit Polyclonal Antibody
Description	Rabbit Polyclonal Antibody
Host	Rabbit
Application	IF, WB, ELISA
Reactivity	Human, Rat, Mouse

Performance

Conjugation	Unconjugated
Modification	Unmodified
Isotype	IgG
Clonality	Polyclonal
Form	Liquid
Storage	Store at 4°C short term. Aliquot and store at -20°C long term. Avoid freeze/thaw cycles.
Buffer	Liquid in PBS containing 50% glycerol, 0.5% BSA and 0.02% New type preservative N.
Purification	Affinity purification

Immunogen

Gene Name	GPR149
Alternative Names	GPR149; PGR10; Probable G-protein coupled receptor 149; G-protein coupled receptor PGR10
Gene ID	344758.0
SwissProt ID	Q86SP6. The antiserum was produced against synthesized peptide derived from human GPR149. AA range:451-500

Application

Dilution Ratio	WB 1:500 - 1:2000. IF 1:200 - 1:1000. ELISA: 1:5000. Not yet tested in other applications.
Molecular Weight	81kD

Product Name: GPR149 Rabbit Polyclonal Antibody
Catalog #: APRab11645

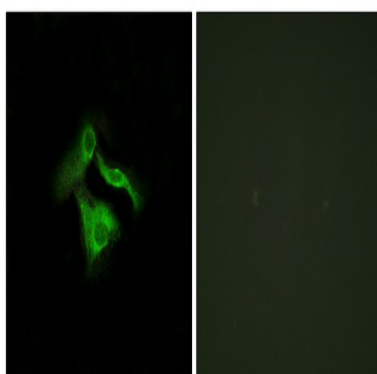


Background

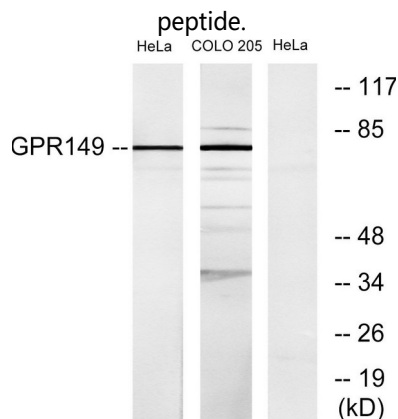
function:Orphan receptor.,similarity:Belongs to the G-protein coupled receptor 1 family.,function:Orphan receptor.,similarity:Belongs to the G-protein coupled receptor 1 family.,

Research Area

Image Data

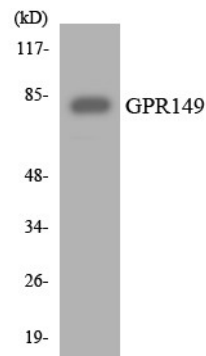


Immunofluorescence analysis of HeLa cells, using GPR149 Antibody. The picture on the right is blocked with the synthesized



Western blot analysis of lysates from HeLa and COLO205 cells, using GPR149 Antibody. The lane on the right is blocked with the synthesized peptide.

Product Name: GPR149 Rabbit Polyclonal Antibody
Catalog #: APRab11645



Western blot analysis of the lysates from 293 cells using GPR149 antibody.

Note

For research use only.