

Product Name: ERp57 Rabbit Polyclonal Antibody
Catalog #: APRab10614



Summary

Production Name	ERp57 Rabbit Polyclonal Antibody
Description	Rabbit Polyclonal Antibody
Host	Rabbit
Application	WB,IHC,IF,ELISA
Reactivity	Human,Mouse,Rat

Performance

Conjugation	Unconjugated
Modification	Unmodified
Isotype	IgG
Clonality	Polyclonal
Form	Liquid
Storage	Store at 4°C short term. Aliquot and store at -20°C long term. Avoid freeze/thaw cycles.
Buffer	Liquid in PBS containing 50% glycerol, 0.5% BSA and 0.02% New type preservative N.
Purification	Affinity purification

Immunogen

Gene Name	PDIA3
Alternative Names	PDIA3; ERP57; ERP60; GRP58; Protein disulfide-isomerase A3; 58 kDa glucose-regulated protein; 58 kDa microsomal protein; p58; Disulfide isomerase ER-60;Endoplasmic reticulum resident protein 57; ER protein 57; ERp57; Endoplasmic reticulum resident protein 60; ER protein 60; ERp60
Gene ID	2923.0
SwissProt ID	P30101.The antiserum was produced against synthesized peptide derived from the Internal region of human PDIA3. AA range:111-160

Application

Dilution Ratio	WB 1:500 - 1:2000. IHC-p: 1:100-300 ELISA: 1:20000.. IF 1:50-200
Molecular Weight	55kD

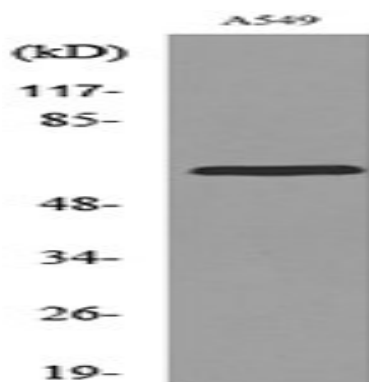
Background

This gene encodes a protein of the endoplasmic reticulum that interacts with lectin chaperones calreticulin and calnexin to modulate folding of newly synthesized glycoproteins. The protein was once thought to be a phospholipase; however, it has been demonstrated that the protein actually has protein disulfide isomerase activity. It is thought that complexes of lectins and this protein mediate protein folding by promoting formation of disulfide bonds in their glycoprotein substrates. [provided by RefSeq, Jul 2008],catalytic activity:Catalyzes the rearrangement of -S-S- bonds in proteins.,caution:Was originally thought to be a phosphatidylinositol-4,5-bisphosphate phosphodiesterase type I (phospholipase C-alpha),.mass spectrometry: PubMed:11840567,similarity:Belongs to the protein disulfide isomerase family.,similarity:Contains 2 thioredoxin domains.,subcellular location:Identified by mass spectrometry in melanosome fractions from stage I to stage IV.,subunit:Interacts with ERP27 and CANX.,

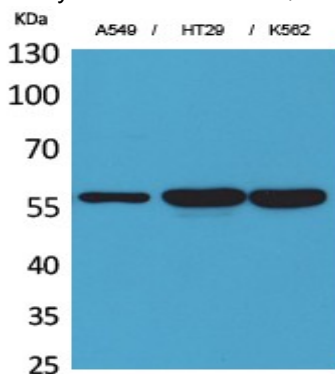
Research Area

Antigen processing and presentation;

Image Data



Western blot analysis of lysate from A549 cells, using PDIA3 Antibody.

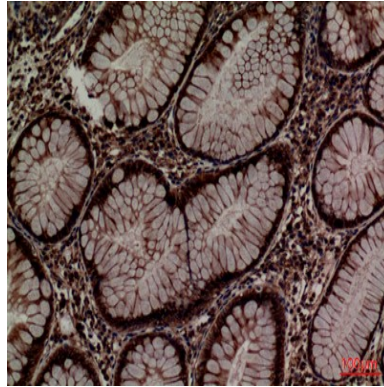


Western Blot analysis of A549, HT29, K562 cells using ERp57 Polyclonal Antibody.. Secondary antibody was diluted at

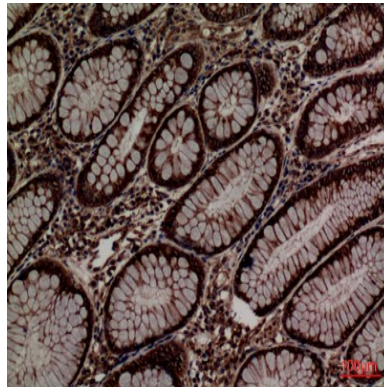
Product Name: ERp57 Rabbit Polyclonal Antibody
Catalog #: APRab10614



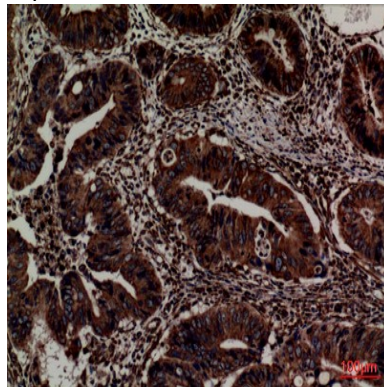
1:20000



Immunohistochemical analysis of paraffin-embedded human-colon, antibody was diluted at 1:100

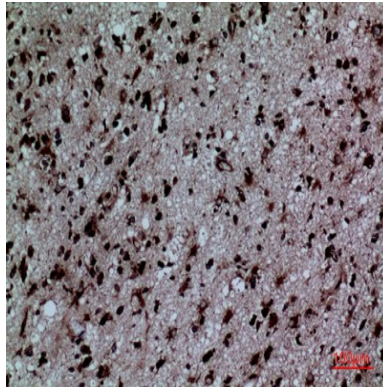


Immunohistochemical analysis of paraffin-embedded human-colon, antibody was diluted at 1:100

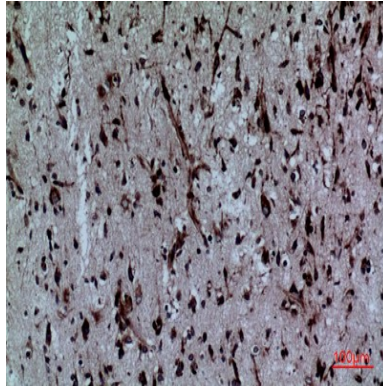


Immunohistochemical analysis of paraffin-embedded human-colon, antibody was diluted at 1:100

Product Name: ERp57 Rabbit Polyclonal Antibody
Catalog #: APRab10614



Immunohistochemical analysis of paraffin-embedded human-brain, antibody was diluted at 1:100



Immunohistochemical analysis of paraffin-embedded human-brain, antibody was diluted at 1:100

Note

For research use only.