

Summary

Production Name	Epsin 3 Rabbit Polyclonal Antibody
Description	Rabbit Polyclonal Antibody
Host	Rabbit
Application	IHC,WB,ELISA
Reactivity	Human,Rat,Mouse

Performance

Conjugation	Unconjugated
Modification	Unmodified
Isotype	IgG
Clonality	Polyclonal
Form	Liquid
Storage	Store at 4°C short term. Aliquot and store at -20°C long term. Avoid freeze/thaw cycles.
Buffer	Liquid in PBS containing 50% glycerol, 0.5% BSA and 0.02% New type preservative N.
Purification	Affinity purification

Immunogen

Gene Name	EPN3
Alternative Names	EPN3; Epsin-3; EPS-15-interacting protein 3
Gene ID	55040.0
SwissProt ID	Q9H201.The antiserum was produced against synthesized peptide derived from human EPN3. AA range:401-450

Application

Dilution Ratio	WB 1:500 - 1:2000. IHC 1:100 - 1:300. ELISA: 1:10000..
Molecular Weight	68kD

Background

Product Name: Epsin 3 Rabbit Polyclonal Antibody
Catalog #: APRab10556

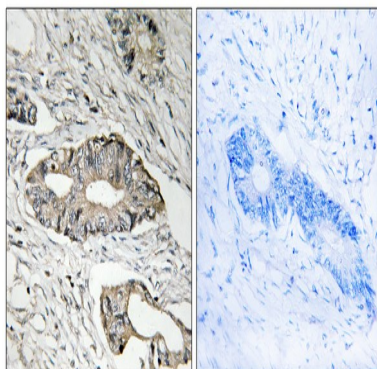


induction:In keratinocytes, by wounding or contact with collagen.,similarity:Belongs to the epsin family.,similarity:Contains 1 ENTH (epsin N-terminal homology) domain.,similarity:Contains 2 UIM (ubiquitin-interacting motif) repeats.,subcellular location:Concentrated in the perinuclear region and associated with clathrin-coated vesicles close to the cell periphery. May shuttle to the nucleus.,tissue specificity:Detected in migrating keratinocytes from wounded skin, but not in differentiating keratinocytes or in normal skin. Detected in chronic wounds, basal cell carcinoma and ulcerative colitis.,induction:In keratinocytes, by wounding or contact with collagen.,similarity:Belongs to the epsin family.,similarity:Contains 1 ENTH (epsin N-terminal homology) domain.,similarity:Contains 2 UIM (ubiquitin-interacting motif) repeats.,subcellular location:Concentrated in the perinuclear region and associated with clathrin-coated vesicles close to the cell periphery. May shuttle to the nucleus.,tissue specificity:Detected in migrating keratinocytes from wounded skin, but not in differentiating keratinocytes or in normal skin. Detected in chronic wounds, basal cell carcinoma and ulcerative colitis.,

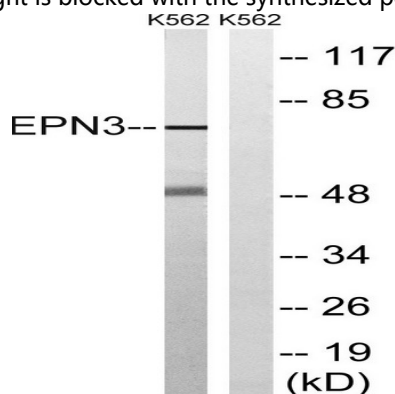
Research Area

Endocytosis;

Image Data

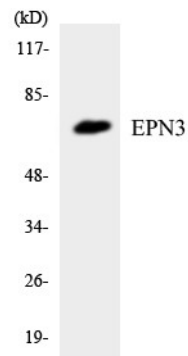


Immunohistochemistry analysis of paraffin-embedded human colon carcinoma tissue, using EPN3 Antibody. The picture on the right is blocked with the synthesized peptide.



Western blot analysis of lysates from K562 cells, using EPN3 Antibody. The lane on the right is blocked with the synthesized peptide.

Product Name: Epsin 3 Rabbit Polyclonal Antibody
Catalog #: APRab10556



Western blot analysis of the lysates from COLO205 cells using EPN3 antibody.

Note

For research use only.