

**Product Name: EphB3 Rabbit Polyclonal Antibody**  
**Catalog #: APRab10528**



## Summary

<b>Production Name</b>	EphB3 Rabbit Polyclonal Antibody
<b>Description</b>	Rabbit Polyclonal Antibody
<b>Host</b>	Rabbit
<b>Application</b>	IHC,ELISA
<b>Reactivity</b>	Human,Mouse,Rat

## Performance

<b>Conjugation</b>	Unconjugated
<b>Modification</b>	Unmodified
<b>Isotype</b>	IgG
<b>Clonality</b>	Polyclonal
<b>Form</b>	Liquid
<b>Storage</b>	Store at 4°C short term. Aliquot and store at -20°C long term. Avoid freeze/thaw cycles.
<b>Buffer</b>	Liquid in PBS containing 50% glycerol, 0.5% BSA and 0.02% New type preservative N.
<b>Purification</b>	Affinity purification

## Immunogen

<b>Gene Name</b>	EPHB3 ETK2 HEK2 TYRO6
<b>Alternative Names</b>	Ephrin type-B receptor 3 (EC 2.7.10.1;EPH-like tyrosine kinase 2;EPH-like kinase 2;Embryonic kinase 2;EK2;hEK2;Tyrosine-protein kinase TYRO6)
<b>Gene ID</b>	2049.0
<b>SwissProt ID</b>	P54753.Synthetic peptide from human protein at AA range: 650-700

## Application

<b>Dilution Ratio</b>	IHC-p 1:50-200, ELISA 1:10000-20000.
<b>Molecular Weight</b>	

## Background

**Product Name: EphB3 Rabbit Polyclonal Antibody**  
**Catalog #: APRab10528**

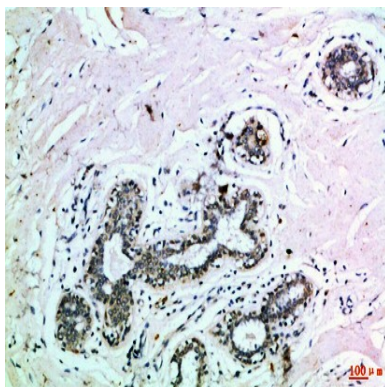


Ephrin receptors and their ligands, the ephrins, mediate numerous developmental processes, particularly in the nervous system. Based on their structures and sequence relationships, ephrins are divided into the ephrin-A (EFNA) class, which are anchored to the membrane by a glycosylphosphatidylinositol linkage, and the ephrin-B (EFNB) class, which are transmembrane proteins. The Eph family of receptors are divided into two groups based on the similarity of their extracellular domain sequences and their affinities for binding ephrin-A and ephrin-B ligands. Ephrin receptors make up the largest subgroup of the receptor tyrosine kinase (RTK) family. This gene encodes a receptor for ephrin-B family members. [provided by RefSeq, Mar 2010],catalytic activity:ATP + a [protein]-L-tyrosine = ADP + a [protein]-L-tyrosine phosphate.,function:Receptor for members of the ephrin-B family. Binds to ephrin-B1 and -B2.,similarity:Belongs to the protein kinase superfamily. Tyr protein kinase family. Ephrin receptor subfamily.,similarity:Contains 1 protein kinase domain.,similarity:Contains 1 SAM (sterile alpha motif) domain.,similarity:Contains 2 fibronectin type-III domains.,tissue specificity:Ubiquitous.,

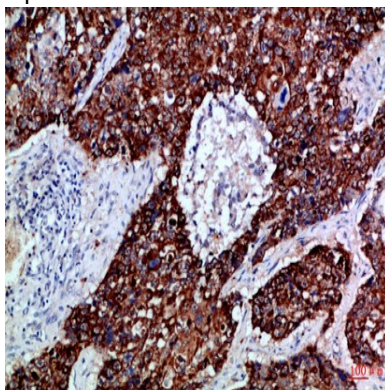
## Research Area

Axon guidance;

## Image Data

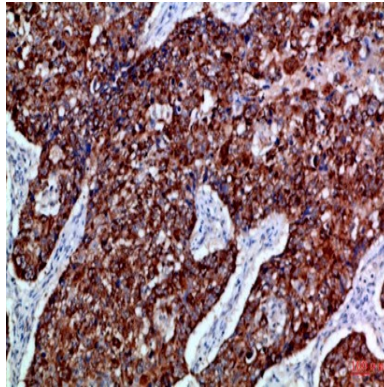


Immunohistochemical analysis of paraffin-embedded Human-breast, antibody was diluted at 1:100



Immunohistochemical analysis of paraffin-embedded Human-lung-cancer, antibody was diluted at 1:100

**Product Name: EphB3 Rabbit Polyclonal Antibody**  
**Catalog #: APRab10528**



Immunohistochemical analysis of paraffin-embedded Human-lung-cancer, antibody was diluted at 1:100

**Note**

For research use only.