
Summary

Production Name	ECRG4 Rabbit Polyclonal Antibody
Description	Rabbit Polyclonal Antibody
Host	Rabbit
Application	IHC,IF,ELISA
Reactivity	Human,Mouse

Performance

Conjugation	Unconjugated
Modification	Unmodified
Isotype	IgG
Clonality	Polyclonal
Form	Liquid
Storage	Store at 4°C short term. Aliquot and store at -20°C long term. Avoid freeze/thaw cycles.
Buffer	Liquid in PBS containing 50% glycerol, 0.5% BSA and 0.02% New type preservative N.
Purification	Affinity purification

Immunogen

Gene Name	C2orf40
Alternative Names	C2orf40; ECRG4; Augurin; Esophageal cancer-related gene 4 protein
Gene ID	84417.0
SwissProt ID	Q9H1Z8.The antiserum was produced against synthesized peptide derived from human ECRG4. AA range:41-90

Application

Dilution Ratio	IHC 1:100 - 1:300. IF 1:200 - 1:1000. ELISA: 1:20000. Not yet tested in other applications.
Molecular Weight	

Background

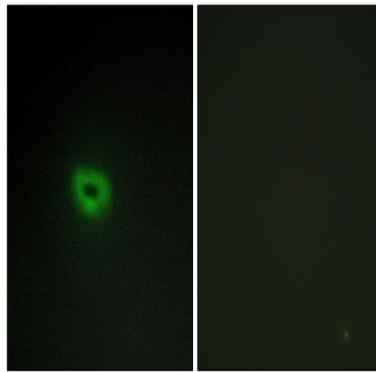
Product Name: ECRG4 Rabbit Polyclonal Antibody
Catalog #: APRab10286



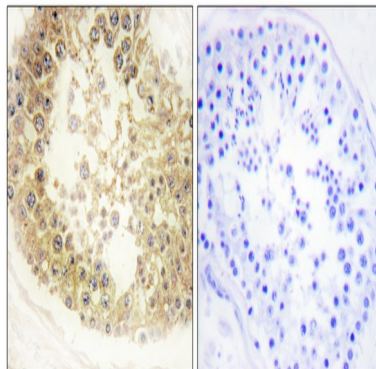
function:Probable hormone.,similarity:Belongs to the augurin family.,function:Probable hormone.,similarity:Belongs to the augurin family.,

Research Area

Image Data



Immunofluorescence analysis of A549 cells, using ECRG4 Antibody. The picture on the right is blocked with the synthesized peptide.



Immunohistochemistry analysis of paraffin-embedded human testis tissue, using ECRG4 Antibody. The picture on the right is blocked with the synthesized peptide.

Note

For research use only.