

**Product Name: Dynein LC 2 Rabbit Polyclonal Antibody**  
**Catalog #: APRab10230**



---

## Summary

<b>Production Name</b>	Dynein LC 2 Rabbit Polyclonal Antibody
<b>Description</b>	Rabbit Polyclonal Antibody
<b>Host</b>	Rabbit
<b>Application</b>	IHC,ELISA
<b>Reactivity</b>	Human,Mouse,Rat

## Performance

<b>Conjugation</b>	Unconjugated
<b>Modification</b>	Unmodified
<b>Isotype</b>	IgG
<b>Clonality</b>	Polyclonal
<b>Form</b>	Liquid
<b>Storage</b>	Store at 4°C short term. Aliquot and store at -20°C long term. Avoid freeze/thaw cycles.
<b>Buffer</b>	Liquid in PBS containing 50% glycerol, 0.5% BSA and 0.02% New type preservative N.
<b>Purification</b>	Affinity purification

## Immunogen

<b>Gene Name</b>	DYNLL2
<b>Alternative Names</b>	DYNLL2; DLC2; Dynein light chain 2; cytoplasmic; 8 kDa dynein light chain b; DLC8b; Dynein light chain LC8-type 2
<b>Gene ID</b>	140735.0
<b>SwissProt ID</b>	Q96FJ2.The antiserum was produced against synthesized peptide derived from human DYNLL2. AA range:1-50

## Application

<b>Dilution Ratio</b>	IHC 1:100 - 1:300. ELISA: 1:40000..
<b>Molecular Weight</b>	

**Product Name: Dynein LC 2 Rabbit Polyclonal Antibody**  
**Catalog #: APRab10230**

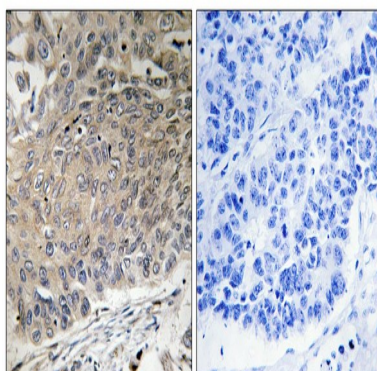


## Background

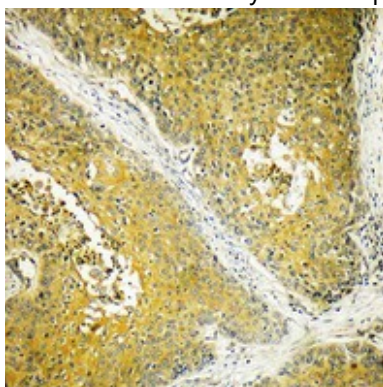
function:May be involved in some aspects of dynein-related intracellular transport and motility. May play a role in changing or maintaining the spatial distribution of cytoskeletal structures.,similarity:Belongs to the dynein light chain family.,subunit:Homodimer. Interacts with BMF. Component of the myosin V motor complex as well as the microtubular dynein motor complex. Interacts with rabies virus phosphoprotein.,function:May be involved in some aspects of dynein-related intracellular transport and motility. May play a role in changing or maintaining the spatial distribution of cytoskeletal structures.,similarity:Belongs to the dynein light chain family.,subunit:Homodimer. Interacts with BMF. Component of the myosin V motor complex as well as the microtubular dynein motor complex. Interacts with rabies virus phosphoprotein.,

## Research Area

## Image Data

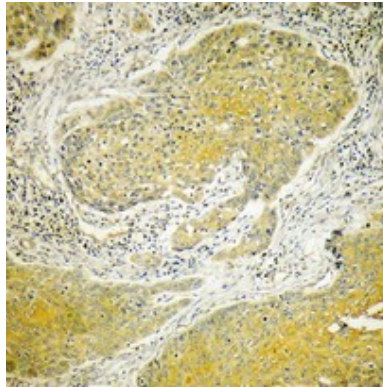


Immunohistochemistry analysis of paraffin-embedded human lung carcinoma tissue, using DYNLL2 Antibody. The picture on the right is blocked with the synthesized peptide.



Immunohistochemical analysis of paraffin-embedded Human breast cancer. Antibody was diluted at 1:100 (4°,overnight) . High-pressure and temperature Tris-EDTA,pH8.0 was used for antigen retrieval.

**Product Name: Dynein LC 2 Rabbit Polyclonal Antibody**  
**Catalog #: APRab10230**



Immunohistochemical analysis of paraffin-embedded Human breast cancer. Antibody was diluted at 1:100 (4°,overnight) .  
High-pressure and temperature Tris-EDTA,pH8.0 was used for antigen retrieval.

**Note**

For research use only.