

Product Name: CYTL1 Rabbit Polyclonal Antibody
Catalog #: APRab09704



Summary

Production Name	CYTL1 Rabbit Polyclonal Antibody
Description	Rabbit Polyclonal Antibody
Host	Rabbit
Application	IHC, WB, ELISA
Reactivity	Human, Rat, Mouse

Performance

Conjugation	Unconjugated
Modification	Unmodified
Isotype	IgG
Clonality	Polyclonal
Form	Liquid
Storage	Store at 4°C short term. Aliquot and store at -20°C long term. Avoid freeze/thaw cycles.
Buffer	Liquid in PBS containing 50% glycerol, 0.5% BSA and 0.02% New type preservative N.
Purification	Affinity purification

Immunogen

Gene Name	CYTL1
Alternative Names	CYTL1; C4orf4; Cytokine-like protein 1; Protein C17
Gene ID	54360.0
SwissProt ID	Q9NRR1. The antiserum was produced against synthesized peptide derived from human CYTL1. AA range: 61-110

Application

Dilution Ratio	WB 1:500 - 1:2000. IHC 1:100 - 1:300. ELISA: 1:40000..
Molecular Weight	16kD

Background

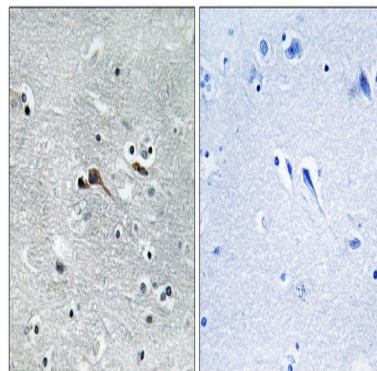
Product Name: CYTL1 Rabbit Polyclonal Antibody
Catalog #: APRab09704



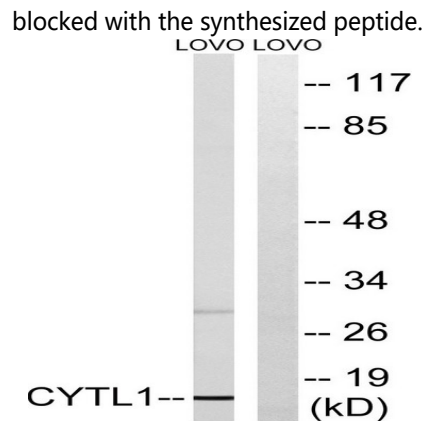
C17 is a cytokine-like protein specifically expressed in bone marrow and cord blood mononuclear cells that bear the CD34 (MIM 142230) surface marker (Liu et al., 2000 [PubMed 10857752]).[supplied by OMIM, Mar 2008],tissue specificity:Specifically expressed in CD34+ hematopoietic cells.,

Research Area

Image Data

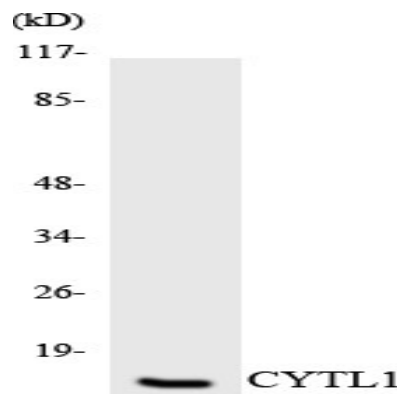


Immunohistochemistry analysis of paraffin-embedded human brain tissue, using CYTL1 Antibody. The picture on the right is blocked with the synthesized peptide.



Western blot analysis of lysates from LOVO cells, using CYTL1 Antibody. The lane on the right is blocked with the synthesized peptide.

Product Name: CYTL1 Rabbit Polyclonal Antibody
Catalog #: APRab09704



Western blot analysis of the lysates from HT-29 cells using CYTL1 antibody.

Note

For research use only.