

---

## Summary

<b>Production Name</b>	CYP2A13 Rabbit Polyclonal Antibody
<b>Description</b>	Rabbit Polyclonal Antibody
<b>Host</b>	Rabbit
<b>Application</b>	WB,ELISA
<b>Reactivity</b>	Human,Rat,Mouse

## Performance

<b>Conjugation</b>	Unconjugated
<b>Modification</b>	Unmodified
<b>Isotype</b>	IgG
<b>Clonality</b>	Polyclonal
<b>Form</b>	Liquid
<b>Storage</b>	Store at 4°C short term. Aliquot and store at -20°C long term. Avoid freeze/thaw cycles.
<b>Buffer</b>	Liquid in PBS containing 50% glycerol, 0.5% BSA and 0.02% New type preservative N.
<b>Purification</b>	Affinity purification

## Immunogen

<b>Gene Name</b>	CYP2A13
<b>Alternative Names</b>	CYP2A13; Cytochrome P450 2A13; CYP11A13
<b>Gene ID</b>	1553.0
<b>SwissProt ID</b>	Q16696.The antiserum was produced against synthesized peptide derived from human Cytochrome P450 2A13. AA range:311-360

## Application

<b>Dilution Ratio</b>	WB 1:500 - 1:2000. ELISA: 1:20000. Not yet tested in other applications.
<b>Molecular Weight</b>	56kD

## Background

---

**Product Name: CYP2A13 Rabbit Polyclonal Antibody**  
**Catalog #: APRab09644**

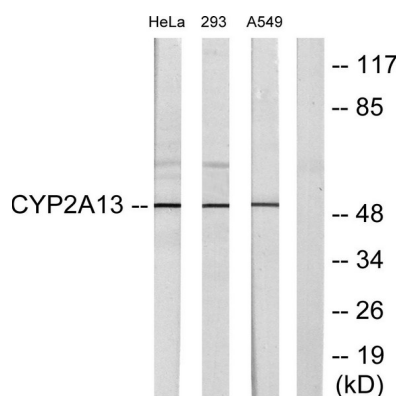


cytochrome P450 family 2 subfamily A member 13(CYP2A13) Homo sapiens This gene encodes a member of the cytochrome P450 superfamily of enzymes. The cytochrome P450 proteins are monooxygenases which catalyze many reactions involved in drug metabolism and synthesis of cholesterol, steroids and other lipids. This protein localizes to the endoplasmic reticulum. Although its endogenous substrate has not been determined, it is known to metabolize 4-(methylnitrosamino)-1-(3-pyridyl)-1-butanone, a major nitrosamine specific to tobacco. This gene is part of a large cluster of cytochrome P450 genes from the CYP2A, CYP2B and CYP2F subfamilies on chromosome 19q. [provided by RefSeq, Jul 2008],catalytic activity:RH + reduced flavoprotein + O(2) = ROH + oxidized flavoprotein + H(2)O.,cofactor:Heme group.,function:Exhibits a coumarin 7-hydroxylase activity. Active in the metabolic activation of hexamethylphosphoramide, N,N-dimethylaniline, 2'-methoxyacetophenone, N-nitrosomethylphenylamine, and the tobacco-specific carcinogen, 4-(methylnitrosamino)-1-(3-pyridyl)-1-butanone.,online information:CYP2A13 alleles,polymorphism:The frequencies of the Cys-257 allele in white, black, Hispanic, and Asian individuals are 1.9%, 14.4%, 5.8%, and 7.7%, respectively. The Cys-257 variant is 37 to 56% less active than the wild-type Arg-257 protein toward all substrates tested.,similarity:Belongs to the cytochrome P450 family.,tissue specificity:Expressed in liver and a number of extrahepatic tissues, including nasal mucosa, lung, trachea, brain, mammary gland, prostate, testis, and uterus, but not in heart, kidney, bone marrow, colon, small intestine, spleen, stomach, thymus, or skeletal muscle.,

## Research Area

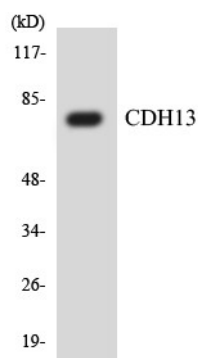
Caffeine metabolism;Retinol metabolism;Drug metabolism;Drug metabolism;

## Image Data

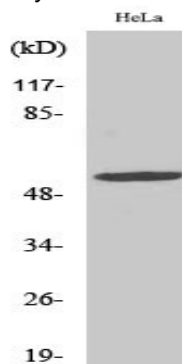


Western blot analysis of lysates from HeLa, 293, and A549 cells, using Cytochrome P450 2A13 Antibody. The lane on the right is blocked with the synthesized peptide.

**Product Name: CYP2A13 Rabbit Polyclonal Antibody**  
**Catalog #: APRab09644**



Western blot analysis of the lysates from HT-29 cells using CDH13 antibody.



Western Blot analysis of various cells using CYP2A13 Polyclonal Antibody diluted at 1: 2000

### **Note**

For research use only.