
Summary

Production Name	CXCR-7 Rabbit Polyclonal Antibody
Description	Rabbit Polyclonal Antibody
Host	Rabbit
Application	IF, WB,
Reactivity	Human, Mouse, Rat, Monkey

Performance

Conjugation	Unconjugated
Modification	Unmodified
Isotype	IgG
Clonality	Polyclonal
Form	Liquid
Storage	Store at 4°C short term. Aliquot and store at -20°C long term. Avoid freeze/thaw cycles.
Buffer	Liquid in PBS containing 50% glycerol, 0.5% BSA and 0.02% New type preservative N.
Purification	Affinity purification

Immunogen

Gene Name	CXCR7 CXCR7; CMKOR1; GPR159; RDC1; C-X-C chemokine receptor type 7; CXC-R7; CXCR-7;
Alternative Names	Chemokine orphan receptor 1; G-protein coupled receptor 159; G-protein coupled receptor RDC1 homolog; RDC-1
Gene ID	57007.0
SwissProt ID	P25106. The antiserum was produced against synthesized peptide derived from human CXCR7. AA range: 311-360

Application

Dilution Ratio	WB 1:500 - 1:2000. IF 1:200 - 1:1000. ELISA: 1:20000. Not yet tested in other applications.
-----------------------	---

Product Name: CXCR-7 Rabbit Polyclonal Antibody
Catalog #: APRab09564



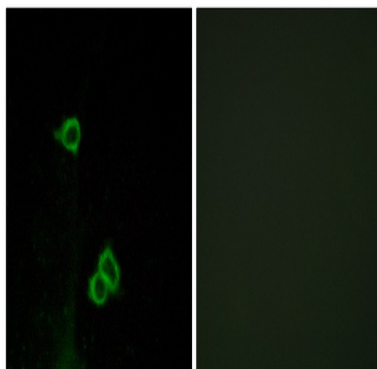
Molecular Weight 41kD

Background

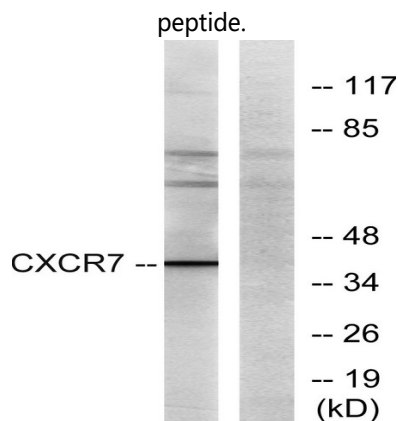
This gene encodes a member of the G-protein coupled receptor family. Although this protein was earlier thought to be a receptor for vasoactive intestinal peptide (VIP), it is now considered to be an orphan receptor, in that its endogenous ligand has not been identified. The protein is also a coreceptor for human immunodeficiency viruses (HIV). Translocations involving this gene and HMGA2 on chromosome 12 have been observed in lipomas. [provided by RefSeq, Jul 2008],caution:Was originally (PubMed:1675791) thought to be the receptor for VIP.,function:Receptor for CXCL12/SDF1. Acts as coreceptor with CXCR4 for a restricted number of HIV isolates.,online information:CXC chemokine receptors entry,similarity:Belongs to the G-protein coupled receptor 1 family.,tissue specificity:Expressed in monocytes, basophils, and B-cells. Lower expression in CD4+ T-lymphocytes and natural killer cells.,

Research Area

Image Data

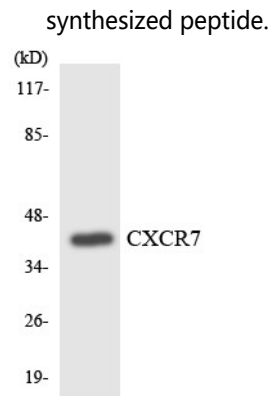


Immunofluorescence analysis of COS7 cells, using CXCR7 Antibody. The picture on the right is blocked with the synthesized peptide.

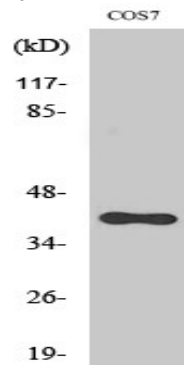


Western blot analysis of lysates from COS7 cells, using CXCR7 Antibody. The lane on the right is blocked with the

Product Name: CXCR-7 Rabbit Polyclonal Antibody
Catalog #: APRab09564



Western blot analysis of the lysates from RAW264.7 cells using CXCR7 antibody.



Western Blot analysis of various cells using CXCR-7 Polyclonal Antibody diluted at 1: 2000

Note

For research use only.