

## Summary

|                        |                                  |
|------------------------|----------------------------------|
| <b>Production Name</b> | CTACK Rabbit Polyclonal Antibody |
| <b>Description</b>     | Rabbit Polyclonal Antibody       |
| <b>Host</b>            | Rabbit                           |
| <b>Application</b>     | WB,IHC,ELISA                     |
| <b>Reactivity</b>      | Human,Rat,Mouse                  |

## Performance

|                     |                                                                                          |
|---------------------|------------------------------------------------------------------------------------------|
| <b>Conjugation</b>  | Unconjugated                                                                             |
| <b>Modification</b> | Unmodified                                                                               |
| <b>Isotype</b>      | IgG                                                                                      |
| <b>Clonality</b>    | Polyclonal                                                                               |
| <b>Form</b>         | Liquid                                                                                   |
| <b>Storage</b>      | Store at 4°C short term. Aliquot and store at -20°C long term. Avoid freeze/thaw cycles. |
| <b>Buffer</b>       | Liquid in PBS containing 50% glycerol, 0.5% BSA and 0.02% New type preservative N.       |
| <b>Purification</b> | Affinity purification                                                                    |

## Immunogen

|                          |                                                                                                                                                                                           |
|--------------------------|-------------------------------------------------------------------------------------------------------------------------------------------------------------------------------------------|
| <b>Gene Name</b>         | CCL27                                                                                                                                                                                     |
| <b>Alternative Names</b> | CCL27; ILC; SCYA27; C-C motif chemokine 27; CC chemokine ILC; Cutaneous T-cell-attracting chemokine; CTACK; ESKine; IL-11 R-alpha-locus chemokine; Skinkine; Small-inducible cytokine A27 |
| <b>Gene ID</b>           | 10850.0                                                                                                                                                                                   |
| <b>SwissProt ID</b>      | Q9Y4X3.Synthesized peptide derived from C-C motif chemokine 27 at AA range: 51-100                                                                                                        |

## Application

|                         |                                                         |
|-------------------------|---------------------------------------------------------|
| <b>Dilution Ratio</b>   | WB 1:500 - 1:2000. IHC-p: 1:100-1:300. ELISA: 1:10000.. |
| <b>Molecular Weight</b> | 12kD                                                    |

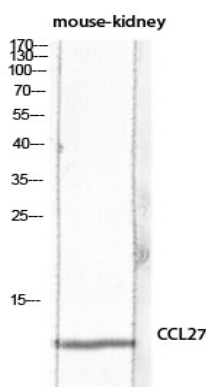
## Background

This gene is one of several CC cytokine genes clustered on the p-arm of chromosome 9. Cytokines are a family of secreted proteins involved in immunoregulatory and inflammatory processes. The CC cytokines are proteins characterized by two adjacent cysteines. The protein encoded by this gene is chemotactic for skin-associated memory T lymphocytes. This cytokine may also play a role in mediating homing of lymphocytes to cutaneous sites. It specifically binds to chemokine receptor 10 (CCR10). Studies of a similar murine protein indicate that these protein-receptor interactions have a pivotal role in T cell-mediated skin inflammation. [provided by RefSeq, Sep 2014],function:Chemotactic factor that attracts skin-associated memory T-lymphocytes. May play a role in mediating homing of lymphocytes to cutaneous sites. Binds to CCR10.,online information:CCL27 entry,similarity:Belongs to the intercrine beta (chemokine CC) family.,tissue specificity:Testis, thymus, placenta, ovary and skin.,

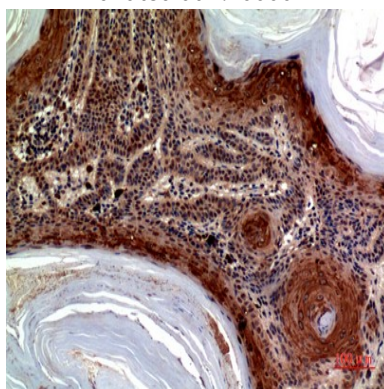
## Research Area

Cytokine-cytokine receptor interaction;Chemokine;Intestinal immune network for IgA production;

## Image Data

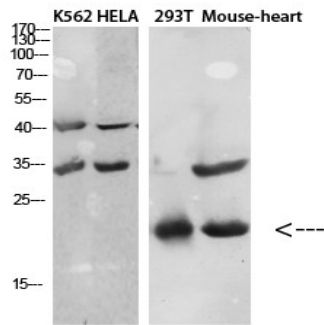


Western blot analysis of mouse-kidney lysis using CCL27 antibody. Antibody was diluted at 1:1000. Secondary antibody was diluted at 1:20000



Immunohistochemical analysis of paraffin-embedded human-skin, antibody was diluted at 1:100

**Product Name: CTACK Rabbit Polyclonal Antibody**  
**Catalog #: APRab09486**



Western Blot analysis of various cells using Antibody diluted at 1:1000. Secondary antibody was diluted at 1:20000

**Note**

For research use only.