

---

## Summary

|                        |                                  |
|------------------------|----------------------------------|
| <b>Production Name</b> | Cdc5L Rabbit Polyclonal Antibody |
| <b>Description</b>     | Rabbit Polyclonal Antibody       |
| <b>Host</b>            | Rabbit                           |
| <b>Application</b>     | WB,IHC,ELISA                     |
| <b>Reactivity</b>      | Human,Mouse,Rat                  |

## Performance

|                     |  |
|---------------------|--|
| <b>Conjugation</b>  | Unconjugated   |
| <b>Modification</b> | Unmodified   |
| <b>Isotype</b>      | IgG  |
| <b>Clonality</b>    | Polyclonal   |
| <b>Form</b>         | Liquid   |
| <b>Storage</b>      | Store at 4°C short term. Aliquot and store at -20°C long term. Avoid freeze/thaw cycles. |
| <b>Buffer</b>       | Liquid in PBS containing 50% glycerol, 0.5% BSA and 0.02% New type preservative N.       |
| <b>Purification</b> | Affinity purification  |

## Immunogen

|                          |   |
|--------------------------|---|
| <b>Gene Name</b>         | CDC5L   |
| <b>Alternative Names</b> | CDC5L; KIAA0432; PCDC5RP; Cell division cycle 5-like protein; Cdc5-like protein; Pombe cdc5-related protein |
| <b>Gene ID</b>           | 988.0   |
| <b>SwissProt ID</b>      | Q99459.The antiserum was produced against synthesized peptide derived from human CDC5L. AA range:721-770    |

## Application

|                         |   |
|-------------------------|---|
| <b>Dilution Ratio</b>   | WB 1:500 - 1:2000. IHC 1:100 - 1:300. ELISA: 1:5000.. |
| <b>Molecular Weight</b> |   |

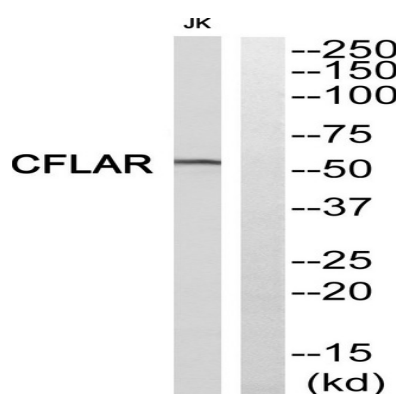
## Background

The protein encoded by this gene shares a significant similarity with *Schizosaccharomyces pombe* cdc5 gene product, which is a cell cycle regulator important for G2/M transition. This protein has been demonstrated to act as a positive regulator of cell cycle G2/M progression. It was also found to be an essential component of a non-snRNA spliceosome, which contains at least five additional protein factors and is required for the second catalytic step of pre-mRNA splicing. [provided by RefSeq, Jul 2008],disease:A chromosomal aberration involving CDC5L is found in multicystic renal dysplasia. Translocation t(6;19)(p21;q13.1) with USF2.,function:DNA-binding protein involved in cell cycle control. May act as a transcription activator. Also seems to be involved in the second catalytic step of pre-mRNA splicing.,PTM:Phosphorylated; which enhances interaction with PPP1R8.,similarity:Belongs to the CEF1 family.,similarity:Contains 2 HTH myb-type DNA-binding domains.,subcellular location:May shuttle between cytoplasm and nucleus.,subunit:Homodimer. Interacts with DAPK3 (By similarity). Binds to DNA. Binds to adeno-pre-mRNA in an ATP-stimulated manner. Belongs to the spliceosome complex. Part of a spliceosomal 'core' complex consisting of CDC5L, PLRG1, SPF27, CCAP1, CCAP3 and CCAP6. Interacts with PLRG1, Lodestar/TTF2, and NIPP1/PPP1R8. Identified in the spliceosome C complex, at least composed of AQR, C19orf29, CDC40, CDC5L, CRNKL1, DDX23, DDX41, DDX48, DDX5, DGCR14, DHX35, DHX38, DHX8, EFTUD2, FRG1, GPATC1, HNRPA1, HNRPA2B1, HNRPA3, HNRPC, HNRPF, HNRPH1, HNRPK, HNRPM, HNRPR, HNRPU, KIAA1160, KIAA1604, LSM2, LSM3, MAGOH, MORG1, PABPC1, PLRG1, PNN, PPIE, PPIL1, PPIL3, PPWD1, PRPF19, PRPF4B, PRPF6, PRPF8, RALY, RBM22, RBM8A, RBMX, SART1, SF3A1, SF3A2, SF3A3, SF3B1, SF3B2, SF3B3, SFRS1, SKIV2L2, SNRNP200, SNRNP40, SNRPA1, SNRPB, SNRPB2, SNRPD1, SNRPD2, SNRPD3, SNRPE, SNRPF, SNRPG, SNW1, SRRM1, SRRM2, SYF2, SYNCRIP, TFIP11, THOC4, U2AF1, XAB2 and ZCCHC8.,tissue specificity:Ubiquitously expressed in both fetal and adult tissues.,

## Research Area

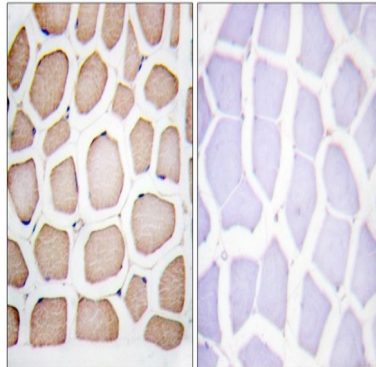
Spliceosome;

## Image Data

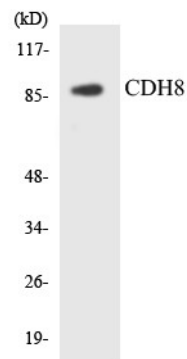


Western blot analysis of CDC5L Antibody. The lane on the right is blocked with the CDC5L peptide.

**Product Name: Cdc5L Rabbit Polyclonal Antibody**  
**Catalog #: APRab08527**



Immunohistochemistry analysis of paraffin-embedded human smooth muscle, using CDC5L Antibody. The lane on the right is blocked with the CDC5L peptide.



Western blot analysis of the lysates from HeLa cells using CDH8 antibody.

## **Note**

For research use only.