

Summary

Production Name	CD70 Rabbit Polyclonal Antibody
Description	Rabbit Polyclonal Antibody
Host	Rabbit
Application	IHC,ELISA
Reactivity	Human,Mouse

Performance

Conjugation	Unconjugated
Modification	Unmodified
Isotype	IgG
Clonality	Polyclonal
Form	Liquid
Storage	Store at 4°C short term. Aliquot and store at -20°C long term. Avoid freeze/thaw cycles.
Buffer	Liquid in PBS containing 50% glycerol, 0.5% BSA and 0.02% New type preservative N.
Purification	Affinity purification

Immunogen

Gene Name	CD70 CD27L CD27LG TNFSF7
Alternative Names	CD70 antigen (CD27 ligand;CD27-L;Tumor necrosis factor ligand superfamily member 7;CD antigen CD70)
Gene ID	970.0
SwissProt ID	P32970.Synthetic peptide from human protein at AA range: 150-193

Application

Dilution Ratio	IHC 1:50-200, ELISA 1:10000-20000.
Molecular Weight	

Background

Product Name: CD70 Rabbit Polyclonal Antibody
Catalog #: APRab08443

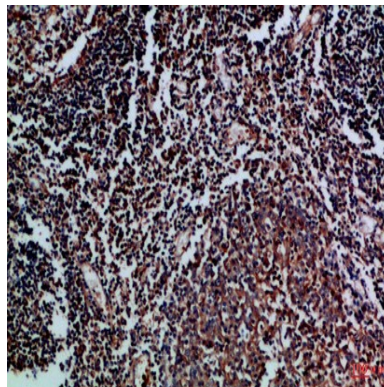


The protein encoded by this gene is a cytokine that belongs to the tumor necrosis factor (TNF) ligand family. This cytokine is a ligand for TNFRSF27/CD27. It is a surface antigen on activated, but not on resting, T and B lymphocytes. It induces proliferation of costimulated T cells, enhances the generation of cytolytic T cells, and contributes to T cell activation. This cytokine is also reported to play a role in regulating B-cell activation, cytotoxic function of natural killer cells, and immunoglobulin synthesis. [provided by RefSeq, Jul 2008],function:Cytokine that binds to CD27. Plays a role in T-cell activation. Induces the proliferation of costimulated T-cells and enhances the generation of cytolytic T-cells.,similarity:Belongs to the tumor necrosis factor family.,subunit:Homotrimer.,

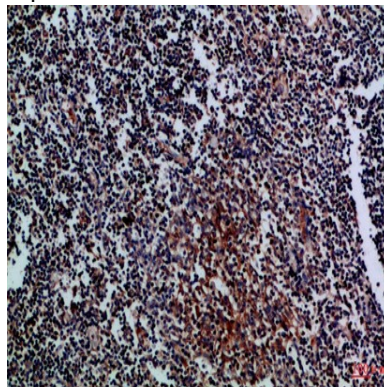
Research Area

Cytokine-cytokine receptor interaction;

Image Data



Immunohistochemical analysis of paraffin-embedded Human-tonsil, antibody was diluted at 1:100



Immunohistochemical analysis of paraffin-embedded Human-tonsil, antibody was diluted at 1:100

Note

For research use only.