

---

## Summary

<b>Production Name</b>	CD172b Rabbit Polyclonal Antibody
<b>Description</b>	Rabbit Polyclonal Antibody
<b>Host</b>	Rabbit
<b>Application</b>	WB,ELISA
<b>Reactivity</b>	Human,Rat,Mouse

## Performance

<b>Conjugation</b>	Unconjugated
<b>Modification</b>	Unmodified
<b>Isotype</b>	IgG
<b>Clonality</b>	Polyclonal
<b>Form</b>	Liquid
<b>Storage</b>	Store at 4°C short term. Aliquot and store at -20°C long term. Avoid freeze/thaw cycles.
<b>Buffer</b>	Liquid in PBS containing 50% glycerol, 0.5% BSA and 0.02% New type preservative N.
<b>Purification</b>	Affinity purification

## Immunogen

<b>Gene Name</b>	SIRPB1
<b>Alternative Names</b>	SIRPB1; Signal-regulatory protein beta-1; SIRP-beta-1; CD172 antigen-like family member B; CD antigen CD172b
<b>Gene ID</b>	10326.0
<b>SwissProt ID</b>	O00241.The antiserum was produced against synthesized peptide derived from human SIRPB1. AA range:231-280

## Application

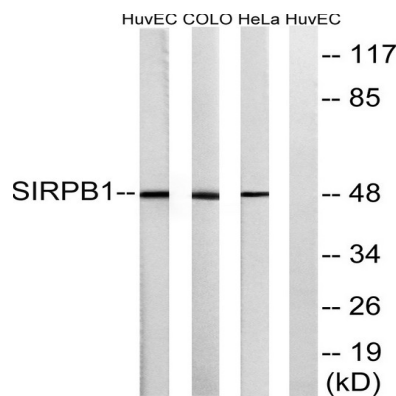
<b>Dilution Ratio</b>	WB 1:500 - 1:2000. ELISA: 1:5000.
<b>Molecular Weight</b>	48kD

## Background

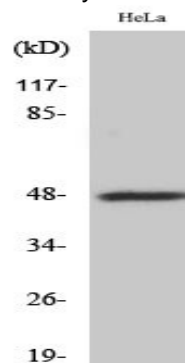
The protein encoded by this gene is a member of the signal-regulatory-protein (SIRP) family, and also belongs to the immunoglobulin superfamily. SIRP family members are receptor-type transmembrane glycoproteins known to be involved in the negative regulation of receptor tyrosine kinase-coupled signaling processes. This protein was found to interact with TYROBP/DAP12, a protein bearing immunoreceptor tyrosine-based activation motifs. This protein was also reported to participate in the recruitment of tyrosine kinase SYK. Multiple transcript variants encoding different isoforms have been found for this gene. [provided by RefSeq, Feb 2009],function:Immunoglobulin-like cell surface receptor involved in the negative regulation of receptor tyrosine kinase-coupled signaling processes.,function:Immunoglobulin-like cell surface receptor involved in the negative regulation of receptor tyrosine kinase-coupled signaling processes. Participates also in the recruitment of tyrosine kinase SYK.,PTM:N-glycosylated.,similarity:Contains 1 Ig-like V-type (immunoglobulin-like) domain.,similarity:Contains 2 Ig-like C1-type (immunoglobulin-like) domains.,subunit:Interacts with TYROBP. This interaction results in the recruitment of SYK.,tissue specificity:Detected in monocytes and dendritic cells.,

## Research Area

## Image Data



Western blot analysis of lysates from HeLa, COLO, and HUVEC cells, using SIRPB1 Antibody. The lane on the right is blocked with the synthesized peptide.



**Product Name: CD172b Rabbit Polyclonal Antibody**  
**Catalog #: APRab08249**



---

Western Blot analysis of various cells using CD172b Polyclonal Antibody

**Note**

For research use only.