

Product Name: Casein Kinase I α 1/1L Rabbit Polyclonal Antibody
Catalog #: APRab07939



Summary

| | |
|------------------------|--|
| Production Name | Casein Kinase I α 1/1L Rabbit Polyclonal Antibody |
| Description | Rabbit Polyclonal Antibody |
| Host | Rabbit |
| Application | IHC,IF,ELISA |
| Reactivity | Human,Mouse,Rat |

Performance

| | |
|---------------------|--|
| Conjugation | Unconjugated |
| Modification | Unmodified |
| Isotype | IgG |
| Clonality | Polyclonal |
| Form | Liquid |
| Storage | Store at 4°C short term. Aliquot and store at -20°C long term. Avoid freeze/thaw cycles. |
| Buffer | Liquid in PBS containing 50% glycerol, 0.5% BSA and 0.02% New type preservative N. |
| Purification | Affinity purification |

Immunogen

| | |
|--------------------------|---|
| Gene Name | CSNK1A1/CSNK1A1L |
| Alternative Names | CSNK1A1L; Casein kinase I isoform alpha-like; CKI-alpha-like; CK1; CSNK1A1; Casein kinase I isoform alpha; CKI-alpha; CK1 |
| Gene ID | 122011/1452 |
| SwissProt ID | Q8N752/P48729.The antiserum was produced against synthesized peptide derived from human CKI-alpha1/L. AA range:141-190 |

Application

| | |
|-------------------------|---|
| Dilution Ratio | IHC 1:100 - 1:300. IF 1:200 - 1:1000. ELISA: 1:20000. Not yet tested in other applications. |
| Molecular Weight | 30kD |

Product Name: Casein Kinase I α 1/1L Rabbit Polyclonal Antibody
Catalog #: APRab07939



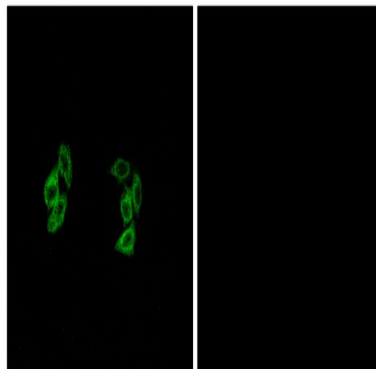
Background

catalytic activity:ATP + a protein = ADP + a phosphoprotein.,function:Casein kinases are operationally defined by their preferential utilization of acidic proteins such as caseins as substrates. It can phosphorylate a large number of proteins. Participates in Wnt signaling.,similarity:Belongs to the protein kinase superfamily. CK1 Ser/Thr protein kinase family. Casein kinase I subfamily.,similarity:Contains 1 protein kinase domain.,catalytic activity:ATP + a protein = ADP + a phosphoprotein.,function:Casein kinases are operationally defined by their preferential utilization of acidic proteins such as caseins as substrates. It can phosphorylate a large number of proteins. Participates in Wnt signaling.,similarity:Belongs to the protein kinase superfamily. CK1 Ser/Thr protein kinase family. Casein kinase I subfamily.,similarity:Contains 1 protein kinase domain.,

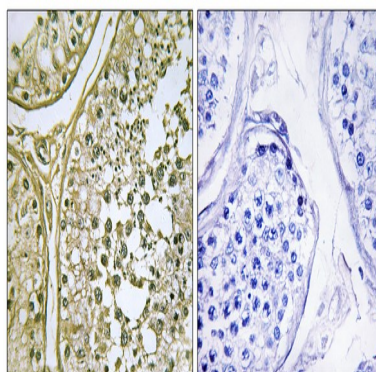
Research Area

WNT;WNT-T CELLHedgehog;

Image Data



Immunofluorescence analysis of A549 cells, using CKI- α 1/L Antibody. The picture on the right is blocked with the synthesized peptide.



Immunohistochemistry analysis of paraffin-embedded human testis tissue, using CKI- α 1/L Antibody. The picture on the

**Product Name: Casein Kinase I α 1/1L Rabbit Polyclonal
Antibody
Catalog #: APRab07939**



right is blocked with the synthesized peptide.

Note

For research use only.