

**Product Name: Calbindin D28K Rabbit Polyclonal Antibody**  
**Catalog #: APRab07846**

---

## Summary

<b>Production Name</b>	Calbindin D28K Rabbit Polyclonal Antibody
<b>Description</b>	Rabbit Polyclonal Antibody
<b>Host</b>	Rabbit
<b>Application</b>	WB,IHC,ELISA
<b>Reactivity</b>	Human,Mouse,Rat

## Performance

<b>Conjugation</b>	Unconjugated
<b>Modification</b>	Unmodified
<b>Isotype</b>	IgG
<b>Clonality</b>	Polyclonal
<b>Form</b>	Liquid
<b>Storage</b>	Store at 4°C short term. Aliquot and store at -20°C long term. Avoid freeze/thaw cycles.
<b>Buffer</b>	Liquid in PBS containing 50% glycerol, 0.5% BSA and 0.02% New type preservative N.
<b>Purification</b>	Affinity purification

## Immunogen

<b>Gene Name</b>	CALB1
<b>Alternative Names</b>	CALB1; CAB27; Calbindin; Calbindin D28; D-28K; Vitamin D-dependent calcium-binding protein, avian-type
<b>Gene ID</b>	793.0
<b>SwissProt ID</b>	P05937.The antiserum was produced against synthesized peptide derived from the C-terminal region of human CALB1. AA range:191-240

## Application

<b>Dilution Ratio</b>	WB 1:500 - 1:2000. IHC-p: 1:100-300 ELISA: 1:20000..
<b>Molecular Weight</b>	30kD

**Product Name: Calbindin D28K Rabbit Polyclonal Antibody**  
**Catalog #: APRab07846**

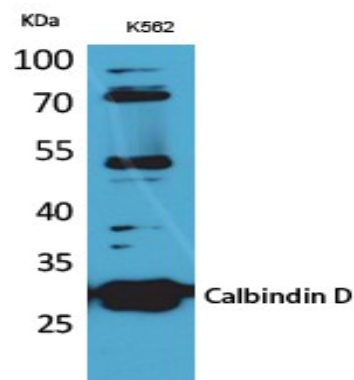
---

## Background

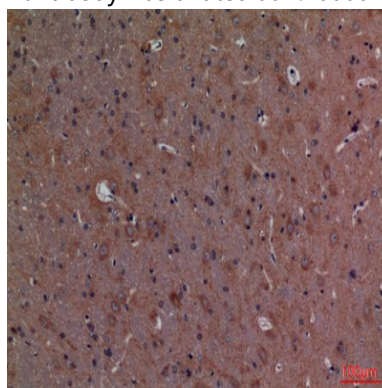
The protein encoded by this gene is a member of the calcium-binding protein superfamily that includes calmodulin and troponin C. Originally described as a 27 kDa protein, it is now known to be a 28 kDa protein. It contains four active calcium-binding domains, and has two modified domains that are thought to have lost their calcium binding capability. This protein is thought to buffer entry of calcium upon stimulation of glutamate receptors. Depletion of this protein was noted in patients with Huntington disease. [provided by RefSeq, Jan 2015],domain:This protein has four functional calcium-binding sites; potential sites II and VI have lost affinity for calcium.,function:Buffers cytosolic calcium. May stimulate a membrane Ca(2+)-ATPase and a 3',5'-cyclic nucleotide phosphodiesterase.,online information:Calbindin entry,similarity:Belongs to the calbindin family.,similarity:Contains 5 EF-hand domains.,subunit:Interacts with RANBP9,.

## Research Area

## Image Data



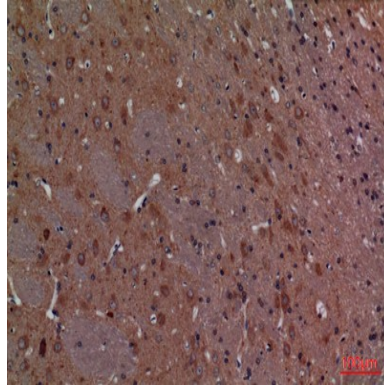
Western Blot analysis of K562 cells using Calbindin D28K Polyclonal Antibody. Antibody was diluted at 1:1000. Secondary antibody was diluted at 1:20000



Immunohistochemical analysis of paraffin-embedded rat-brain, antibody was diluted at 1:100

**Product Name: Calbindin D28K Rabbit Polyclonal  
Antibody**  
**Catalog #: APRab07846**

---



Immunohistochemical analysis of paraffin-embedded rat-brain, antibody was diluted at 1:100

**Note**

For research use only.