

Summary

Production Name	C1QBP Rabbit Polyclonal Antibody
Description	Rabbit Polyclonal Antibody
Host	Rabbit
Application	IHC, WB, ELISA
Reactivity	Human, Mouse, Rat

Performance

Conjugation	Unconjugated
Modification	Unmodified
Isotype	IgG
Clonality	Polyclonal
Form	Liquid
Storage	Store at 4°C short term. Aliquot and store at -20°C long term. Avoid freeze/thaw cycles.
Buffer	Liquid in PBS containing 50% glycerol, 0.5% BSA and 0.02% New type preservative N.
Purification	Affinity purification

Immunogen

Gene Name	C1QBP
Alternative Names	C1QBP; GC1QBP; HABP1; SF2P32; Complement component 1 Q subcomponent-binding protein; mitochondrial; GC1q-R protein; Glycoprotein gC1qBP; C1qBP; Hyaluronan-binding protein 1; Mitochondrial matrix protein p32; p33
Gene ID	708.0
SwissProt ID	Q07021. The antiserum was produced against synthesized peptide derived from human C1QBP. AA range: 61-110

Application

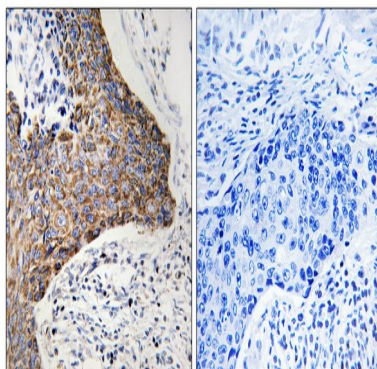
Dilution Ratio	WB 1:500 - 1:2000. IHC 1:100 - 1:300. ELISA: 1:40000..
Molecular Weight	32kD

Background

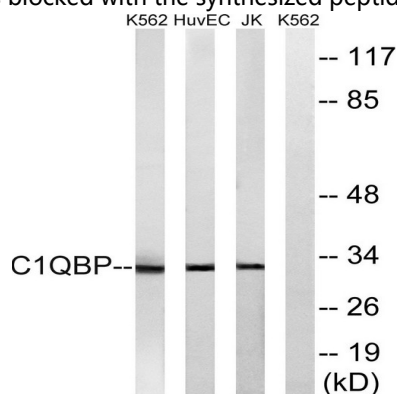
The human complement subcomponent C1q associates with C1r and C1s in order to yield the first component of the serum complement system. The protein encoded by this gene is known to bind to the globular heads of C1q molecules and inhibit C1 activation. This protein has also been identified as the p32 subunit of pre-mRNA splicing factor SF2, as well as a hyaluronic acid-binding protein. [provided by RefSeq, Jul 2008],caution:Was originally (PubMed:1830244 and PubMed:8262387) thought to be a pre-mRNA splicing factor SF2 p32 subunit and to play a role in preventing exon skipping, ensuring the accuracy of splicing and regulating alternative splicing.,function:Not known. Binds to the globular "heads" of C1Q thus inhibiting C1 activation.,similarity:Belongs to the MAM33 family.,subunit:Interacts with Rubella virus capsid protein.,

Research Area

Image Data

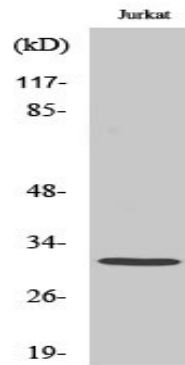


Immunohistochemistry analysis of paraffin-embedded human tonsil tissue, using C1QBP Antibody. The picture on the right is blocked with the synthesized peptide.



Western blot analysis of lysates from Jurkat, HUVEC, and K562 cells, using C1QBP Antibody. The lane on the right is blocked with the synthesized peptide.

Product Name: C1QBP Rabbit Polyclonal Antibody
Catalog #: APRab07724



Western Blot analysis of various cells using C1QBP Polyclonal Antibody diluted at 1: 1000

Note

For research use only.