
Summary

Production Name	C/EBP α Rabbit Polyclonal Antibody
Description	Rabbit Polyclonal Antibody
Host	Rabbit
Application	IHC, WB, ELISA
Reactivity	Human, Mouse, Rat

Performance

Conjugation	Unconjugated
Modification	Unmodified
Isotype	IgG
Clonality	Polyclonal
Form	Liquid
Storage	Store at 4°C short term. Aliquot and store at -20°C long term. Avoid freeze/thaw cycles.
Buffer	Liquid in PBS containing 50% glycerol, 0.5% BSA and 0.02% New type preservative N.
Purification	Affinity purification

Immunogen

Gene Name	CEBPA
Alternative Names	CEBPA; CCAAT/enhancer-binding protein alpha; C/EBP alpha
Gene ID	1050.0
SwissProt ID	P49715. The antiserum was produced against synthesized peptide derived from human C/EBP-alpha. AA range: 6-55

Application

Dilution Ratio	WB 1:500 - 1:2000. IHC 1:100 - 1:300. ELISA: 1:5000..
Molecular Weight	42kd

Background

Product Name: C/EBP α Rabbit Polyclonal Antibody
Catalog #: APRab07705

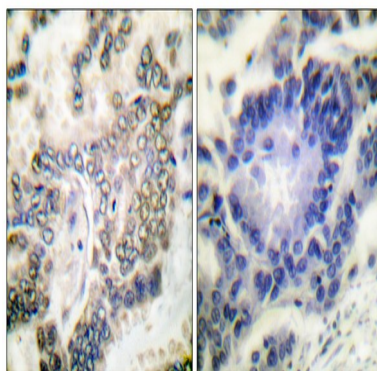


This intronless gene encodes a transcription factor that contains a basic leucine zipper (bZIP) domain and recognizes the CCAAT motif in the promoters of target genes. The encoded protein functions in homodimers and also heterodimers with CCAAT/enhancer-binding proteins beta and gamma. Activity of this protein can modulate the expression of genes involved in cell cycle regulation as well as in body weight homeostasis. Mutation of this gene is associated with acute myeloid leukemia. The use of alternative in-frame non-AUG (GUG) and AUG start codons results in protein isoforms with different lengths. Differential translation initiation is mediated by an out-of-frame, upstream open reading frame which is located between the GUG and the first AUG start codons. [provided by RefSeq, Dec 2013],function:C/EBP is a DNA-binding protein that recognizes two different motifs: the CCAAT homology common to many promoters and the enhanced core homology common to many enhancers.,similarity:Belongs to the bZIP family.,similarity:Belongs to the bZIP family. C/EBP subfamily.,similarity:Contains 1 bZIP domain.,subunit:Binds DNA as a dimer and can form stable heterodimers with C/EBP beta and gamma. Interacts with UBN1. Interacts with HBV protein X.,

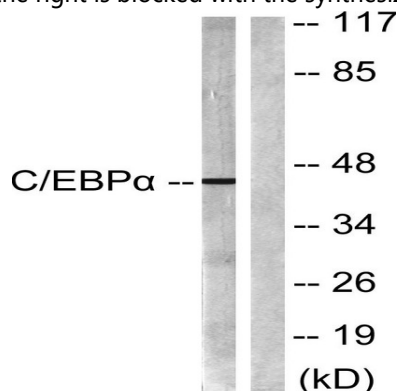
Research Area

Pathways in cancer;Acute myeloid leukemia;

Image Data



Immunohistochemistry analysis of paraffin-embedded human lung carcinoma tissue, using C/EBP-alpha Antibody. The picture on the right is blocked with the synthesized peptide.

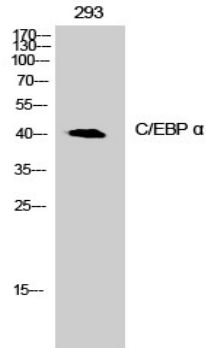


Western blot analysis of lysates from 293 cells, treated with Insulin 0.01U/ml 15', using C/EBP-alpha Antibody. The lane on

Product Name: C/EBP α Rabbit Polyclonal Antibody
Catalog #: APRab07705



the right is blocked with the synthesized peptide.



Western Blot analysis of 293 cells using C/EBP α Polyclonal Antibody cells nucleus extracted by Minute TM Cytoplasmic and Nuclear Fractionation kit (SC-003, Inventbiotech, MN, USA) .

Note

For research use only.