
Summary

Production Name	BUD31 Rabbit Polyclonal Antibody
Description	Rabbit Polyclonal Antibody
Host	Rabbit
Application	WB,ELISA
Reactivity	Human,Mouse,Rat

Performance

Conjugation	Unconjugated
Modification	Unmodified
Isotype	IgG
Clonality	Polyclonal
Form	Liquid
Storage	Store at 4°C short term. Aliquot and store at -20°C long term. Avoid freeze/thaw cycles.
Buffer	Liquid in PBS containing 50% glycerol, 0.5% BSA and 0.02% New type preservative N.
Purification	Affinity purification

Immunogen

Gene Name	BUD31
Alternative Names	BUD31; EDG2; Protein BUD31 homolog; Protein EDG-2; Protein G10 homolog
Gene ID	8896.0
SwissProt ID	P41223.The antiserum was produced against synthesized peptide derived from human BUD31. AA range:10-59

Application

Dilution Ratio	WB 1:500 - 1:2000. ELISA: 1:20000
Molecular Weight	17kD

Background

Product Name: BUD31 Rabbit Polyclonal Antibody
Catalog #: APRab07700

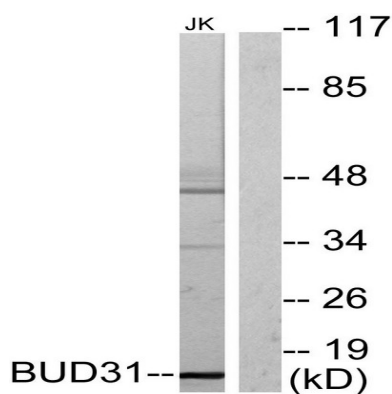


similarity:Belongs to the BUD31 (G10) family.,similarity:Belongs to the BUD31 (G10) family.,

Research Area

Spliceosome;

Image Data



Western blot analysis of lysates from Jurkat cells, using BUD31 Antibody. The lane on the right is blocked with the synthesized peptide.



Western Blot analysis of various cells using BUD31 Polyclonal Antibody cells nucleus extracted by Minute TM Cytoplasmic and Nuclear Fractionation kit (SC-003, Inventbiotech, MN, USA) .

Note

For research use only.