
Summary

Production Name	Brp16 Rabbit Polyclonal Antibody
Description	Rabbit Polyclonal Antibody
Host	Rabbit
Application	IHC, WB, ELISA
Reactivity	Human, Mouse, Rat

Performance

Conjugation	Unconjugated
Modification	Unmodified
Isotype	IgG
Clonality	Polyclonal
Form	Liquid
Storage	Store at 4°C short term. Aliquot and store at -20°C long term. Avoid freeze/thaw cycles.
Buffer	Liquid in PBS containing 50% glycerol, 0.5% BSA and 0.02% New type preservative N.
Purification	Affinity purification

Immunogen

Gene Name	FAM203A
Alternative Names	FAM203A; BRP16; C8orf30A; Protein FAM203A; Brain protein 16
Gene ID	51236.0
SwissProt ID	Q9BTY7. The antiserum was produced against synthesized peptide derived from human BRP16. AA range: 251-300

Application

Dilution Ratio	WB 1:500 - 1:2000. IHC 1:100 - 1:300. ELISA: 1:40000..
Molecular Weight	40kD

Background

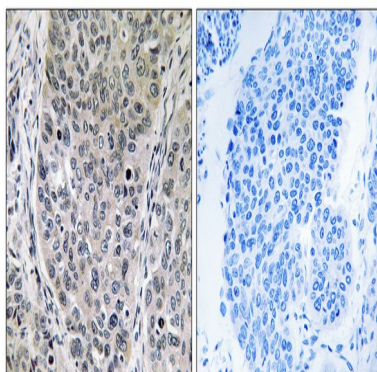
Product Name: Brp16 Rabbit Polyclonal Antibody
Catalog #: APRab07663



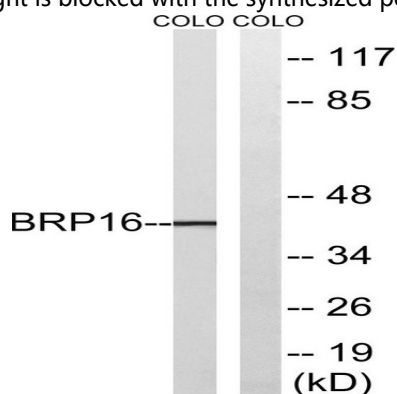
similarity:Belongs to the UPF0570 (BRP16/HGH1) family.,similarity:Belongs to the UPF0570 (BRP16/HGH1) family.,

Research Area

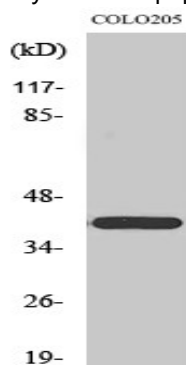
Image Data



Immunohistochemistry analysis of paraffin-embedded human lung carcinoma tissue, using BRP16 Antibody. The picture on the right is blocked with the synthesized peptide.



Western blot analysis of lysates from COLO cells, using BRP16 Antibody. The lane on the right is blocked with the synthesized peptide.



Western Blot analysis of various cells using Brp16 Polyclonal Antibody

Product Name: Brp16 Rabbit Polyclonal Antibody
Catalog #: APRab07663



Note

For research use only.