
Summary

Production Name	B-ATF Rabbit Polyclonal Antibody
Description	Rabbit Polyclonal Antibody
Host	Rabbit
Application	IHC,ELISA
Reactivity	Human,Mouse

Performance

Conjugation	Unconjugated
Modification	Unmodified
Isotype	IgG
Clonality	Polyclonal
Form	Liquid
Storage	Store at 4°C short term. Aliquot and store at -20°C long term. Avoid freeze/thaw cycles.
Buffer	Liquid in PBS containing 50% glycerol, 0.5% BSA and 0.02% New type preservative N.
Purification	Affinity purification

Immunogen

Gene Name	BATF
Alternative Names	BATF; Basic leucine zipper transcriptional factor ATF-like; B-cell-activating transcription factor; B-ATF; SF-HT-activated gene 2 protein; SFA-2
Gene ID	10538.0
SwissProt ID	Q16520.The antiserum was produced against synthesized peptide derived from human BATF. AA range:10-59

Application

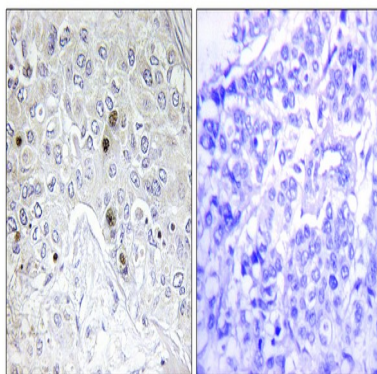
Dilution Ratio	IHC 1:100 - 1:300. ELISA: 1:5000..
Molecular Weight	

Background

The protein encoded by this gene is a nuclear basic leucine zipper protein that belongs to the AP-1/ATF superfamily of transcription factors. The leucine zipper of this protein mediates dimerization with members of the Jun family of proteins. This protein is thought to be a negative regulator of AP-1/ATF transcriptional events. [provided by RefSeq, Jul 2008],function:Functions as a negative regulator of AP-1 mediated transcription by binding to Jun proteins. Jun/B-ATF heterodimers bind DNA preferentially at the 12-O-tetradecanoylphorbol-13-acetate response element (TRE) (consensus: 5'-TGA[CG]TCA-3') and weaker at the cAMP-responsive region (CRE) (consensus: 5'-GTGACGT[AC][AG]-3'), but are transcriptionally inert.,PTM:Phosphorylated.,similarity:Belongs to the bZIP family.,similarity:Contains 1 bZIP domain.,subunit:Forms heterodimers with JUN, JUNB and JUND. Also interacts with IFI35.,tissue specificity:Expressed at highest levels in lung, and at lower levels in placenta, liver, kidney, spleen, and peripheral blood. Detected in SW480 colorectal cancer cell line and several hematopoietic tumor cell lines, including Raji Burkitt's lymphoma. Strongly expressed in mature B- and T-lymphocytes. According to PubMed:10777209 also expressed in moderate levels in lymph node and appendix and at low levels in thymus and bone marrow.,

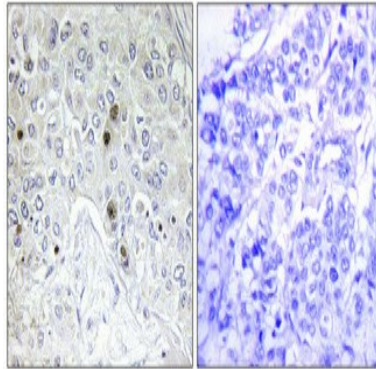
Research Area

Image Data



Immunohistochemistry analysis of paraffin-embedded human breast carcinoma tissue, using B-ATF Antibody. The picture on the right is blocked with the synthesized peptide.

Product Name: B-ATF Rabbit Polyclonal Antibody
Catalog #: APRab07470



Immunohistochemical analysis of paraffin-embedded Human breast cancer. Antibody was diluted at 1:100 (4°,overnight) . High-pressure and temperature Tris-EDTA,pH8.0 was used for antigen retrieval. Negative contrl (right) obtaned from antibody was pre-absorbed by immunogen peptide.

Note

For research use only.