

---

## Summary

|                        |                                  |
|------------------------|----------------------------------|
| <b>Production Name</b> | BAP31 Rabbit Polyclonal Antibody |
| <b>Description</b>     | Rabbit Polyclonal Antibody       |
| <b>Host</b>            | Rabbit                           |
| <b>Application</b>     | WB,ELISA                         |
| <b>Reactivity</b>      | Human,Mouse,Rat                  |

## Performance

|                     |  |
|---------------------|--|
| <b>Conjugation</b>  | Unconjugated   |
| <b>Modification</b> | Unmodified   |
| <b>Isotype</b>      | IgG  |
| <b>Clonality</b>    | Polyclonal   |
| <b>Form</b>         | Liquid   |
| <b>Storage</b>      | Store at 4°C short term. Aliquot and store at -20°C long term. Avoid freeze/thaw cycles. |
| <b>Buffer</b>       | Liquid in PBS containing 50% glycerol, 0.5% BSA and 0.02% New type preservative N.       |
| <b>Purification</b> | Affinity purification  |

## Immunogen

|                          |   |
|--------------------------|---|
| <b>Gene Name</b>         | BCAP31  |
| <b>Alternative Names</b> | BCAP31; BAP31; DXS1357E; B-cell receptor-associated protein 31; BCR-associated protein 31; Bap31; 6C6-AG tumor-associated antigen; Protein CDM; p28 |
| <b>Gene ID</b>           | 10134.0   |
| <b>SwissProt ID</b>      | P51572.The antiserum was produced against synthesized peptide derived from human BAP31. AA range:151-200  |

## Application

|                         |                                    |
|-------------------------|------------------------------------|
| <b>Dilution Ratio</b>   | WB 1:500 - 1:2000. ELISA: 1:40000. |
| <b>Molecular Weight</b> | 28kD                               |

**Product Name: BAP31 Rabbit Polyclonal Antibody**  
**Catalog #: APRab07465**

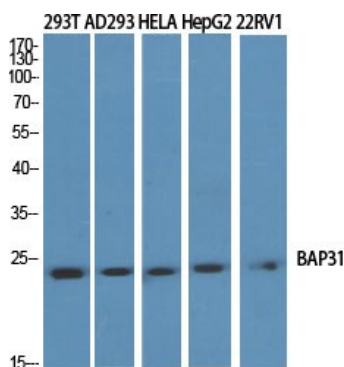


## Background

This gene encodes a member of the B-cell receptor associated protein 31 superfamily. The encoded protein is a multi-pass transmembrane protein of the endoplasmic reticulum that is involved in the anterograde transport of membrane proteins from the endoplasmic reticulum to the Golgi and in caspase 8-mediated apoptosis. Microdeletions in this gene are associated with contiguous ABCD1/DXS1375E deletion syndrome (CADD5), a neonatal disorder. Alternative splicing of this gene results in multiple transcript variants. Two related pseudogenes have been identified on chromosome 16. [provided by RefSeq, Jan 2012],disease:Microdeletions in BCAP31 are involved in the contiguous ABCD1/DXS1375E deletion syndrome (CADD5) [MIM:300475]. Patients manifest profound neonatal hypotonia, subsequent failure to thrive, and cholestatic liver disease.,function:May play a role in anterograde transport of membrane proteins from the endoplasmic reticulum to the Golgi. May be involved in CASP8-mediated apoptosis.,PTM:Cleaved by CASP8 and other caspases.,similarity:Belongs to the BCAP29/BCAP31 family.,subcellular location:May shuttle between the ER and the intermediate compartment/cis-Golgi complex.,subunit:Homodimer and heterodimer with BCAP29. Binds CASP8 (isoform 9) as a complex containing BCAP31, BCAP29, BCL2 and/or BCL2L1. Interacts with VAMP3, VAMP1 and membrane IgD immunoglobulins. May interact with ACTG1 and non-muscle myosin II. Interacts with PTPLB.,tissue specificity:Ubiquitous.,

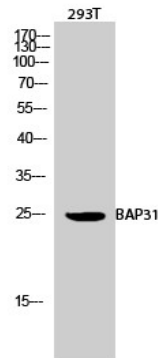
## Research Area

## Image Data



Western Blot analysis of various cells using BAP31 Polyclonal Antibody diluted at 1: 2000

**Product Name: BAP31 Rabbit Polyclonal Antibody**  
**Catalog #: APRab07465**



Western Blot analysis of 293T cells using BAP31 Polyclonal Antibody diluted at 1: 2000

**Note**

For research use only.