

Product Name: Arylsulfatase F Rabbit Polyclonal Antibody
Catalog #: APRab07185

Summary

Production Name	Arylsulfatase F Rabbit Polyclonal Antibody
Description	Rabbit Polyclonal Antibody
Host	Rabbit
Application	WB,IHC,ELISA
Reactivity	Human,Monkey

Performance

Conjugation	Unconjugated
Modification	Unmodified
Isotype	IgG
Clonality	Polyclonal
Form	Liquid
Storage	Store at 4°C short term. Aliquot and store at -20°C long term. Avoid freeze/thaw cycles.
Buffer	Liquid in PBS containing 50% glycerol, 0.5% BSA and 0.02% New type preservative N.
Purification	Affinity purification

Immunogen

Gene Name	ARSF
Alternative Names	ARSF; Arylsulfatase F; ASF
Gene ID	416.0
SwissProt ID	P54793.The antiserum was produced against synthesized peptide derived from human ARSF. AA range:301-350

Application

Dilution Ratio	WB 1:500 - 1:2000. IHC 1:100 - 1:300. ELISA: 1:40000..
Molecular Weight	60kD

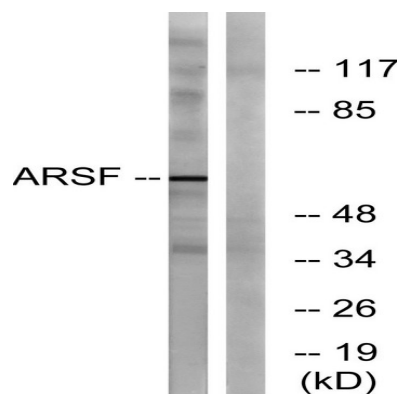
Product Name: Arylsulfatase F Rabbit Polyclonal Antibody
Catalog #: APRab07185

Background

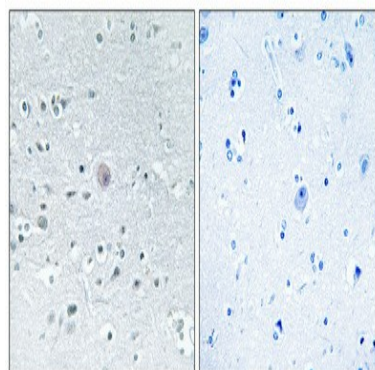
This gene is a member of the sulfatase family, and more specifically, the arylsulfatase subfamily. Members of the subfamily share similarity in sequence and splice sites, and are clustered together on chromosome X, suggesting that they are derived from recent gene duplication events. Sulfatases are essential for the correct composition of bone and cartilage matrix. The activity of this protein, unlike that of arylsulfatase E, is not inhibited by warfarin. Multiple alternatively spliced variants, encoding the same protein, have been identified.[provided by RefSeq, Jan 2011],cofactor: Binds 1 calcium ion per subunit.,enzyme regulation: Not inhibited by DHEAS or warfarin.,PTM: The conversion to 3-oxoalanine (also known as C-formylglycine, FGLy), of a serine or cysteine residue in prokaryotes and of a cysteine residue in eukaryotes, is critical for catalytic activity.,similarity: Belongs to the sulfatase family.,

Research Area

Image Data



Western blot analysis of lysates from COS7 cells, using ARSF Antibody. The lane on the right is blocked with the synthesized peptide.



Immunohistochemical analysis of paraffin-embedded Human brain. Antibody was diluted at 1:100 (4°, overnight). High-pressure and temperature Tris-EDTA, pH 8.0 was used for antigen retrieval. Negative control (right) obtained from antibody

**Product Name: Arylsulfatase F Rabbit Polyclonal
Antibody**
Catalog #: APRab07185



was pre-absorbed by immunogen peptide.

Note

For research use only.