

Product Name: APPL1 Rabbit Polyclonal Antibody
Catalog #: APRab07058



Summary

Production Name	APPL1 Rabbit Polyclonal Antibody
Description	Rabbit Polyclonal Antibody
Host	Rabbit
Application	WB,ELISA
Reactivity	Human,Mouse

Performance

Conjugation	Unconjugated
Modification	Unmodified
Isotype	IgG
Clonality	Polyclonal
Form	Liquid
Storage	Store at 4°C short term. Aliquot and store at -20°C long term. Avoid freeze/thaw cycles.
Buffer	Liquid in PBS containing 50% glycerol, 0.5% BSA and 0.02% New type preservative N.
Purification	Affinity purification

Immunogen

Gene Name	APPL1
Alternative Names	APPL1; APPL; DIP13A; KIAA1428; DCC-interacting protein 13-alpha; Dip13-alpha; Adapter protein containing PH domain; PTB domain and leucine zipper motif 1
Gene ID	26060.0
SwissProt ID	Q9UKG1.The antiserum was produced against synthesized peptide derived from human APPL1. AA range:121-170

Application

Dilution Ratio	WB 1:500 - 1:2000. ELISA: 1:40000.
Molecular Weight	80kD

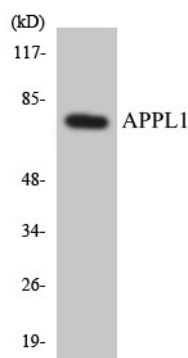
Background

adaptor protein, phosphotyrosine interacting with PH domain and leucine zipper 1 (APPL1) Homo sapiens The protein encoded by this gene has been shown to be involved in the regulation of cell proliferation, and in the crosstalk between the adiponectin signalling and insulin signalling pathways. The encoded protein binds many other proteins, including RAB5A, DCC, AKT2, PIK3CA, adiponectin receptors, and proteins of the NuRD/MeCP1 complex. This protein is found associated with endosomal membranes, but can be released by EGF and translocated to the nucleus. [provided by RefSeq, Jul 2008],domain:Overexpression of an N-terminal domain (residues 1-319) or a C-terminal region (residues 273-709) has a proapoptotic effect.,function:Required for the regulation of cell proliferation in response to extracellular signals from an early endosomal compartment. Links Rab5 to nuclear signal transduction.,PTM:Phosphorylated upon DNA damage, probably by ATM or ATR.,similarity:Contains 1 PH domain.,similarity:Contains 1 PID domain.,subcellular location:Early endosomal membrane-bound and nuclear. Translocated into the nucleus upon release from endosomal membranes following internalization of EGF.,subunit:Binds RAB5A/Rab5 through an N-terminal domain. This interaction is essential for its recruitment to endosomal membranes as well as its role in cell proliferation. Binds DCC and the catalytic domain of the inactive form of AKT2 through its PID domain. Binds PIK3CA and subunits of the NuRD/MeCP1 complex.,tissue specificity:High levels in heart, ovary, pancreas and skeletal muscle.,

Research Area

Pathways in cancer;Colorectal cancer;

Image Data



Western blot analysis of the lysates from K562 cells using APPL1 antibody.

Product Name: APPL1 Rabbit Polyclonal Antibody
Catalog #: APRab07058



Western Blot analysis of various cells using APPL1 Polyclonal Antibody

Note

For research use only.