
Summary

Production Name	ApoOL Rabbit Polyclonal Antibody
Description	Rabbit Polyclonal Antibody
Host	Rabbit
Application	WB,ELISA
Reactivity	Human,Mouse,Rat

Performance

Conjugation	Unconjugated
Modification	Unmodified
Isotype	IgG
Clonality	Polyclonal
Form	Liquid
Storage	Store at 4°C short term. Aliquot and store at -20°C long term. Avoid freeze/thaw cycles.
Buffer	Liquid in PBS containing 50% glycerol, 0.5% BSA and 0.02% New type preservative N.
Purification	Affinity purification

Immunogen

Gene Name	APOOL
Alternative Names	APOOL; CXorf33; FAM121A; Apolipoprotein O-like; Protein FAM121A
Gene ID	139322.0
SwissProt ID	Q6UXV4.The antiserum was produced against synthesized peptide derived from human APOOL. AA range:219-268

Application

Dilution Ratio	WB 1:500 - 1:2000. ELISA: 1:40000.
Molecular Weight	30kD

Background

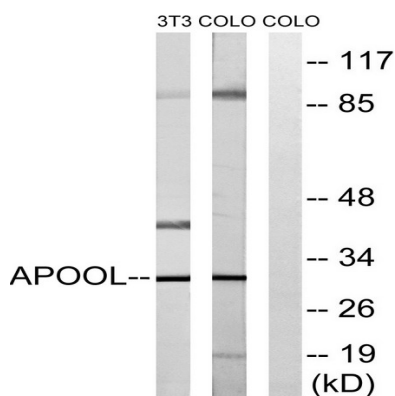
Product Name: ApoOL Rabbit Polyclonal Antibody
Catalog #: APRab07054



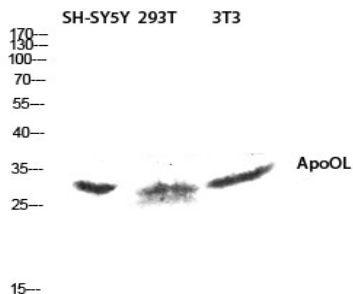
This gene encodes a protein which contains an apolipoprotein O superfamily domain. This domain is found on proteins in circulating lipoprotein complexes. [provided by RefSeq, Sep 2011],similarity:Belongs to the apolipoprotein O family.,

Research Area

Image Data



Western blot analysis of lysates from COLO and NIH/3T3 cells, using APOOL Antibody. The lane on the right is blocked with the synthesized peptide.



Western blot analysis of SH-SY5Y 293T 3T3 lysis using ApoOL antibody. Antibody was diluted at 1:1000

Note

For research use only.