
Summary

| | |
|------------------------|---------------------------------|
| Production Name | APC5 Rabbit Polyclonal Antibody |
| Description | Rabbit Polyclonal Antibody |
| Host | Rabbit |
| Application | WB,ELISA |
| Reactivity | Human,Rat,Mouse |

Performance

| | |
|---------------------|--|
| Conjugation | Unconjugated |
| Modification | Unmodified |
| Isotype | IgG |
| Clonality | Polyclonal |
| Form | Liquid |
| Storage | Store at 4°C short term. Aliquot and store at -20°C long term. Avoid freeze/thaw cycles. |
| Buffer | Liquid in PBS containing 50% glycerol, 0.5% BSA and 0.02% New type preservative N. |
| Purification | Affinity purification |

Immunogen

| | |
|--------------------------|---|
| Gene Name | ANAPC5 |
| Alternative Names | ANAPC5; APC5; Anaphase-promoting complex subunit 5; APC5; Cyclosome subunit 5 |
| Gene ID | 51433.0 |
| SwissProt ID | Q9UJX4.The antiserum was produced against synthesized peptide derived from human ANAPC5. AA range:151-200 |

Application

| | |
|-------------------------|-----------------------------------|
| Dilution Ratio | WB 1:500 - 1:2000. ELISA: 1:5000. |
| Molecular Weight | 85kD |

Background

Product Name: APC5 Rabbit Polyclonal Antibody
Catalog #: APRab07000

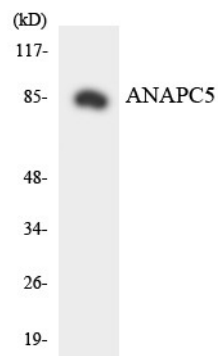


This gene encodes a tetratricopeptide repeat-containing component of the anaphase promoting complex/cyclosome (APC/C), a large E3 ubiquitin ligase that controls cell cycle progression by targeting a number of cell cycle regulators such as B-type cyclins for 26S proteasome-mediated degradation through ubiquitination. The encoded protein is required for the proper ubiquitination function of APC/C and for the interaction of APC/C with transcription coactivators. It also interacts with polyA binding protein and represses internal ribosome entry site-mediated translation. Multiple transcript variants encoding different isoforms have been found for this gene. These differences cause translation initiation at a downstream AUG and result in a shorter protein (isoform b), compared to isoform a. [provided by RefSeq, Nov 2008],function:Component of the anaphase promoting complex/cyclosome (APC/C), a cell cycle-regulated ubiquitin ligase that controls progression through mitosis and the G1 phase of the cell cycle.,pathway:Protein modification; protein ubiquitination.,similarity:Belongs to the APC5 family.,similarity:Contains 4 TPR repeats.,subunit:The APC/C is composed of at least 11 subunits.,

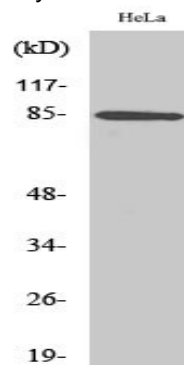
Research Area

Cell_Cycle_G1S;Cell_Cycle_G2M_DNA;Oocyte meiosis;Ubiquitin mediated proteolysis;Progesterone-mediated oocyte maturation;

Image Data



Western blot analysis of the lysates from HeLa cells using ANAPC5 antibody.



Western Blot analysis of various cells using APC5 Polyclonal Antibody

Product Name: APC5 Rabbit Polyclonal Antibody
Catalog #: APRab07000



Note

For research use only.