

Summary

Production Name	AKR1A1 Rabbit Polyclonal Antibody
Description	Rabbit Polyclonal Antibody
Host	Rabbit
Application	WB,ELISA
Reactivity	Human,Mouse,Rat

Performance

Conjugation	Unconjugated
Modification	Unmodified
Isotype	IgG
Clonality	Polyclonal
Form	Liquid
Storage	Store at 4°C short term. Aliquot and store at -20°C long term. Avoid freeze/thaw cycles.
Buffer	Liquid in PBS containing 50% glycerol, 0.5% BSA and 0.02% New type preservative N.
Purification	Affinity purification

Immunogen

Gene Name	AKR1A1
Alternative Names	AKR1A1; ALDR1; ALR; Alcohol dehydrogenase [NADP(+)]; Aldehyde reductase; Aldo-keto reductase family 1 member A1
Gene ID	10327.0
SwissProt ID	P14550.Synthesized peptide derived from AKR1A1 . at AA range: 250-330

Application

Dilution Ratio	WB 1:500 - 1:2000. ELISA: 1:40000.
Molecular Weight	37kD

Background

Product Name: AKR1A1 Rabbit Polyclonal Antibody
Catalog #: APRab06734

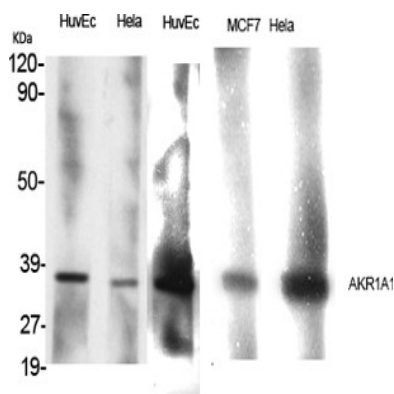


This gene encodes a member of the aldo/keto reductase superfamily, which consists of more than 40 known enzymes and proteins. This member, also known as aldehyde reductase, is involved in the reduction of biogenic and xenobiotic aldehydes and is present in virtually every tissue. Multiple alternatively spliced transcript variants of this gene exist, all encoding the same protein. [provided by RefSeq, Jan 2011],catalytic activity:An alcohol + NADP(+) = an aldehyde + NADPH.,function:Catalyzes the NADPH-dependent reduction of a variety of aldehydes to their corresponding alcohols.,similarity:Belongs to the aldo/keto reductase family.,subunit:Monomer.,

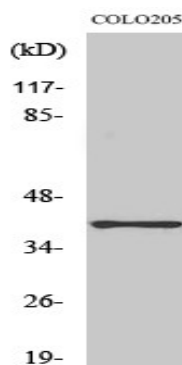
Research Area

Glycolysis / Gluconeogenesis;Glycerolipid metabolism;

Image Data



Western Blot analysis of various cells using AKR1A1 Polyclonal Antibody



Western Blot analysis of NIH-3T3 cells using AKR1A1 Polyclonal Antibody

Note

For research use only.