

Product Name: AGR3 Rabbit Polyclonal Antibody
Catalog #: APRab06680



Summary

Production Name	AGR3 Rabbit Polyclonal Antibody
Description	Rabbit Polyclonal Antibody
Host	Rabbit
Application	IHC,IF,ELISA
Reactivity	Human,Mouse

Performance

Conjugation	Unconjugated
Modification	Unmodified
Isotype	IgG
Clonality	Polyclonal
Form	Liquid
Storage	Store at 4°C short term. Aliquot and store at -20°C long term. Avoid freeze/thaw cycles.
Buffer	Liquid in PBS containing 50% glycerol, 0.5% BSA and 0.02% New type preservative N.
Purification	Affinity purification

Immunogen

Gene Name	AGR3
Alternative Names	AGR3; BCMP11; Anterior gradient protein 3 homolog; AG-3; AG3; hAG-3; Breast cancer membrane protein 11
Gene ID	155465.0
SwissProt ID	Q8TD06.The antiserum was produced against synthesized peptide derived from human AGR3. AA range:1-50

Application

Dilution Ratio	IHC 1:100 - 1:300. IF 1:200 - 1:1000. ELISA: 1:5000. Not yet tested in other applications.
Molecular Weight	

Product Name: AGR3 Rabbit Polyclonal Antibody
Catalog #: APRab06680

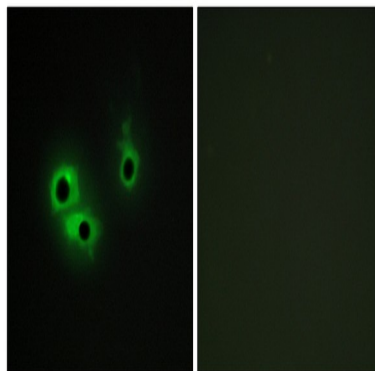


Background

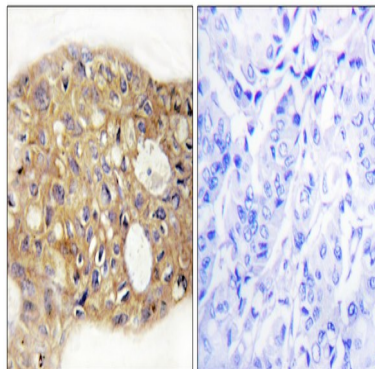
similarity:Belongs to the AGR family.,subunit:Interacts with LYPD3 and alpha-dystroglycan.,similarity:Belongs to the AGR family.,subunit:Interacts with LYPD3 and alpha-dystroglycan.,

Research Area

Image Data



Immunofluorescence analysis of COS7 cells, using AGR3 Antibody. The picture on the right is blocked with the synthesized peptide.



Immunohistochemistry analysis of paraffin-embedded human breast carcinoma tissue, using AGR3 Antibody. The picture on the right is blocked with the synthesized peptide.

Note

For research use only.