

## Summary

<b>Production Name</b>	14-3-3 ζ Rabbit Polyclonal Antibody
<b>Description</b>	Rabbit Polyclonal Antibody
<b>Host</b>	Rabbit
<b>Application</b>	WB,IHC,IP,IF,ELISA
<b>Reactivity</b>	Human,Mouse,Rat

## Performance

<b>Conjugation</b>	Unconjugated
<b>Modification</b>	Unmodified
<b>Isotype</b>	IgG
<b>Clonality</b>	Polyclonal
<b>Form</b>	Liquid
<b>Storage</b>	Store at 4°C short term. Aliquot and store at -20°C long term. Avoid freeze/thaw cycles.
<b>Buffer</b>	Liquid in PBS containing 50% glycerol, 0.5% BSA and 0.02% New type preservative N.
<b>Purification</b>	Affinity purification

## Immunogen

<b>Gene Name</b>	YWHAZ
<b>Alternative Names</b>	YWHAZ; 14-3-3 protein zeta/delta; Protein kinase C inhibitor protein 1; KCIP-1
<b>Gene ID</b>	7534.0
<b>SwissProt ID</b>	P63104.The antiserum was produced against synthesized peptide derived from human 14-3-3 zeta. AA range:24-73

## Application

<b>Dilution Ratio</b>	Western Blot: 1/500 - 1/2000. Immunohistochemistry: 1/100 - 1/300. Immunoprecipitation: 2-5 ug/mg lysate. Immunofluorescence: 1/200 - 1/1000. ELISA: 1/40000. Not yet tested in other applications.
-----------------------	--

**Product Name: 14-3-3  $\zeta$  Rabbit Polyclonal Antibody**  
**Catalog #: APRab06282**



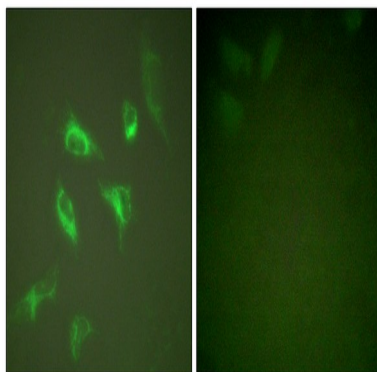
---

**Molecular Weight**

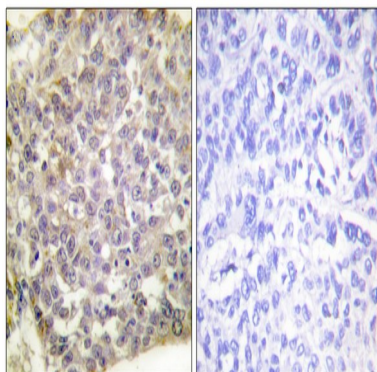
**Background**

**Research Area**

**Image Data**

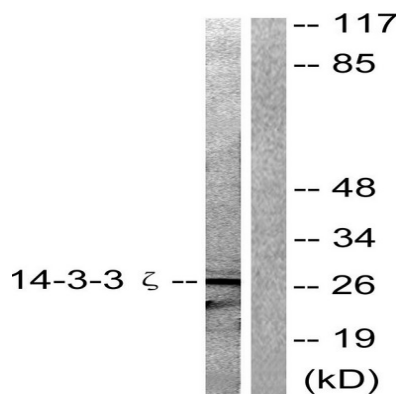


Immunofluorescence analysis of HeLa cells, using 14-3-3 zeta Antibody. The picture on the right is blocked with the synthesized peptide.

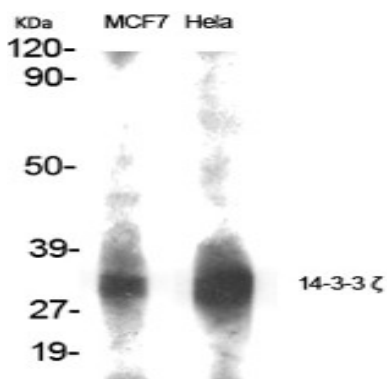


Immunohistochemistry analysis of paraffin-embedded human breast carcinoma tissue, using 14-3-3 zeta Antibody. The picture on the right is blocked with the synthesized peptide.

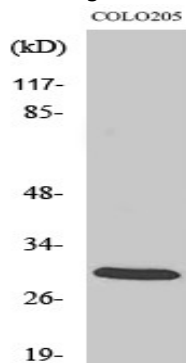
**Product Name: 14-3-3  $\zeta$  Rabbit Polyclonal Antibody**  
**Catalog #: APRab06282**



Western blot analysis of lysates from 293 cells, treated with Forskolin 40nM 30', using 14-3-3 zeta Antibody. The lane on the right is blocked with the synthesized peptide.

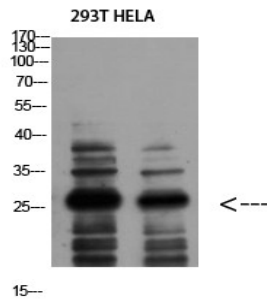


Western Blot analysis of various cells using 14-3-3  $\zeta$  Polyclonal Antibody diluted at 1: 1000



Western Blot analysis of COLO205 cells using 14-3-3  $\zeta$  Polyclonal Antibody diluted at 1: 1000

**Product Name: 14-3-3 ζ Rabbit Polyclonal Antibody**  
**Catalog #: APRab06282**



Western Blot analysis of 293T HELA using 14-3-3 ζ Polyclonal Antibody diluted at 1:1000. Secondary antibody was diluted at 1:20000

### **Note**

For research use only.