

**Product Name: NF-E4 (Acetyl Lys43) Rabbit Polyclonal Antibody**  
**Catalog #: APRab06229**

---

## Summary

<b>Production Name</b>	NF-E4 (Acetyl Lys43) Rabbit Polyclonal Antibody
<b>Description</b>	Rabbit Polyclonal Antibody
<b>Host</b>	Rabbit
<b>Application</b>	WB,ELISA
<b>Reactivity</b>	Human,Rat,Mouse

## Performance

<b>Conjugation</b>	Unconjugated
<b>Modification</b>	Acetyl Antibody
<b>Isotype</b>	IgG
<b>Clonality</b>	Polyclonal
<b>Form</b>	Liquid
<b>Storage</b>	Store at 4°C short term. Aliquot and store at -20°C long term. Avoid freeze/thaw cycles.
<b>Buffer</b>	Liquid in PBS containing 50% glycerol, 0.5% BSA and 0.02% New type preservative N.
<b>Purification</b>	Affinity purification

## Immunogen

<b>Gene Name</b>	NFE4
<b>Alternative Names</b>	NFE4; Transcription factor NF-E4
<b>Gene ID</b>	58160.0
<b>SwissProt ID</b>	Q86UQ8.Synthesized acetyl-peptide derived from the human NF-E4 around the acetylation site of K43.

## Application

<b>Dilution Ratio</b>	WB 1:500-2000 ELISA 2000-20000
<b>Molecular Weight</b>	19kD

**Product Name: NF-E4 (Acetyl Lys43) Rabbit Polyclonal Antibody**  
**Catalog #: APRab06229**

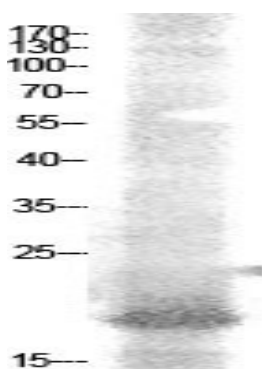


## Background

The erythroid-specific protein encoded by this gene, and the ubiquitous transcription factor CP2, form the stage selector protein (SSP) complex, which is involved in preferential expression of the gamma-globin genes in fetal erythroid cells. Alternate use of an in-frame upstream non-AUG (CUG) translation initiation codon, and a downstream AUG codon, results in two isoforms. While the long isoform (22 kDa) acts as an activator, the short isoform (14 kDa) has been shown to repress gamma-globin gene expression. This gene is located in an intron of the FBXL13 gene on the opposite strand. [provided by RefSeq, Jul 2008],function:Functions as part of the SSP (stage selector protein) complex, a complex that contributes to the preferential expression of the gamma-gene in fetal erythroid cells by facilitating the interaction of the gamma-globin genes with enhancer elements contained in the locus control region (LCR). The complex binds to the stage selector element (SSE) in the proximal gamma-globin promoter. In contrast, isoform 2 acts as a repressor of gamma-globin gene expression by preventing NFE2 and RNA polymerase II recruitment to the promoter.,PTM:Acetylation at Lys-43 prolongs the protein half-life by preventing ubiquitin-mediated degradation and reduces the interaction between NF-E4 and HDAC1, potentially maximizing the activating ability of the factor at the gamma-promoter.,PTM:Ubiquitinated; leading to its degradation by the proteasome. Acetylation at Lys-43 prevents ubiquitination.,sequence caution:Unusual initiator. The initiator methionine is coded by a non-canonical CTG leucine codon.,subunit:Component of the SSP (stage selector protein) complex, which appears to be a heteromer of TFPC2 and 2 copies of NFE4. Interacts with HDAC1 and PCAF. Isoform 2 interacts with TFPC2.,tissue specificity:Specifically expressed in fetal liver, cord blood and bone marrow. Also expressed in the K562 and HEL cell lines, which constitutively express the fetal globin genes.,

## Research Area

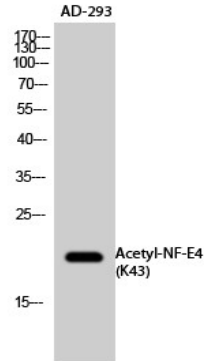
## Image Data



Western Blot analysis of AD-293 cells using Acetyl-NF-E4 (K43) Polyclonal Antibody.. Secondary antibody was diluted at 1:20000

**Product Name: NF-E4 (Acetyl Lys43) Rabbit Polyclonal Antibody**  
**Catalog #: APRab06229**

---



Western Blot analysis of AD-293 cells using Acetyl-NF-E4 (K43) Polyclonal Antibody. Secondary antibody was diluted at 1:20000

**Note**

For research use only.