

Product Name: Vimentin (Phospho-Tyr38) Rabbit Polyclonal Antibody
Catalog #: APRab06112

Summary

Production Name	Vimentin (Phospho-Tyr38) Rabbit Polyclonal Antibody
Description	Rabbit Polyclonal Antibody
Host	Rabbit
Application	ELISA,WB,
Reactivity	Human:Y38,Mouse:Y38,Rat:Y38

Performance

Conjugation	Unconjugated
Modification	Phospho Antibody
Isotype	IgG
Clonality	Polyclonal
Form	Liquid
Storage	Store at 4°C short term. Aliquot and store at -20°C long term. Avoid freeze/thaw cycles.
Buffer	PBS, pH 7.4, containing 0.02% New type preservative N as Preservative and 50% Glycerol.
Purification	Affinity purification

Immunogen

Gene Name	VIM
Alternative Names	VIM
Gene ID	7431.0
SwissProt ID	P08670.Synthesized phospho-peptide around the phosphorylation site of human Vimentin (Phospho-Tyr38)

Application

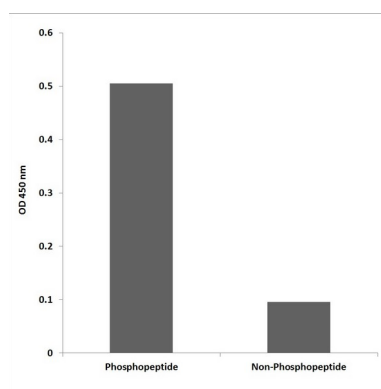
Dilution Ratio	WB 1:500-10000 ELISA: 1:10000
Molecular Weight	51kD

Background

This gene encodes a member of the intermediate filament family. Intermediate filaments, along with microtubules and actin microfilaments, make up the cytoskeleton. The protein encoded by this gene is responsible for maintaining cell shape, integrity of the cytoplasm, and stabilizing cytoskeletal interactions. It is also involved in the immune response, and controls the transport of low-density lipoprotein (LDL)-derived cholesterol from a lysosome to the site of esterification. It functions as an organizer of a number of critical proteins involved in attachment, migration, and cell signaling. Mutations in this gene causes a dominant, pulverulent cataract.[provided by RefSeq, Jun 2009],function:Vimentins are class-III intermediate filaments found in various non-epithelial cells, especially mesenchymal cells.,online information:Vimentin entry,PTM:One of the most prominent phosphoproteins in various cells of mesenchymal origin. Phosphorylation is enhanced during cell division, at which time vimentin filaments are significantly reorganized.,sequence caution:Intron retention.,similarity:Belongs to the intermediate filament family.,subunit:Homopolymer. Interacts with HCV core protein. Interacts with LGSN and SYN1.,tissue specificity:Highly expressed in fibroblasts, some expression in T- and B-lymphocytes, and little or no expression in Burkitt's lymphoma cell lines. Expressed in many hormone-independent mammary carcinoma cell lines.,

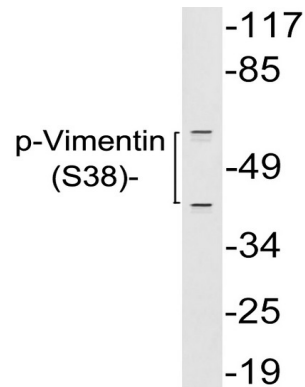
Research Area

Image Data

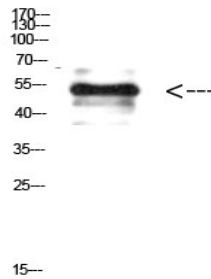


Enzyme-Linked Immunosorbent Assay (Phospho-ELISA) for Immunogen Phosphopeptide (Phospho-left) and Non-Phosphopeptide (Phospho-right) , using Vimentin (Phospho-Ser38) Antibody

**Product Name: Vimentin (Phospho-Tyr38) Rabbit
Polyclonal Antibody
Catalog #: APRab06112**



Western blot analysis of lysates from 293 cells treated with paclitaxel, using p-Vimentin (Phospho-Ser38) antibody.



Western Blot analysis of HELA cells using Antibody diluted at 500. Secondary antibody was diluted at 1:20000

Note

For research use only.