

**Product Name: ZFP598 (phospho Tyr306) Rabbit Polyclonal Antibody**  
**Catalog #: APRab05646**

---

## Summary

<b>Production Name</b>	ZFP598 (phospho Tyr306) Rabbit Polyclonal Antibody
<b>Description</b>	Rabbit Polyclonal Antibody
<b>Host</b>	Rabbit
<b>Application</b>	WB,ELISA
<b>Reactivity</b>	Human,Mouse

## Performance

<b>Conjugation</b>	Unconjugated
<b>Modification</b>	Phospho Antibody
<b>Isotype</b>	IgG
<b>Clonality</b>	Polyclonal
<b>Form</b>	Liquid
<b>Storage</b>	Store at 4°C short term. Aliquot and store at -20°C long term. Avoid freeze/thaw cycles.
<b>Buffer</b>	Liquid in PBS containing 50% glycerol, 0.5% BSA and 0.02% New type preservative N.
<b>Purification</b>	Affinity purification

## Immunogen

<b>Gene Name</b>	ZNF598
<b>Alternative Names</b>	ZNF598; Zinc finger protein 598
<b>Gene ID</b>	90850.0
<b>SwissProt ID</b>	Q86UK7.Synthesized phospho-peptide around the phosphorylation site of human ZFP598 (phospho Tyr306)

## Application

<b>Dilution Ratio</b>	WB 1:500 - 1:2000. ELISA: 1:10000
<b>Molecular Weight</b>	99kD

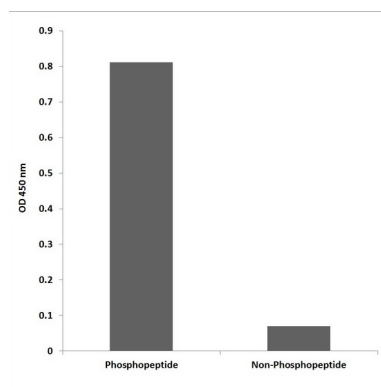
**Product Name: ZFP598 (phospho Tyr306) Rabbit Polyclonal Antibody**  
**Catalog #: APRab05646**

## Background

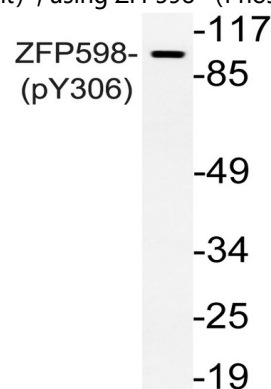
zinc finger protein 598(ZNF598) Homo sapiens Zinc-finger proteins bind nucleic acids and play important roles in various cellular functions, including cell proliferation, differentiation, and apoptosis. This protein and Grb10-interacting GYF protein 2 have been identified as a components of the mammalian 4EHP (m4EHP) complex. The complex is thought to function as a translation repressor in embryonic development. [provided by RefSeq, Oct 2012],similarity:Contains 1 C2H2-type zinc finger.,similarity:Contains 1 RING-type zinc finger.,

## Research Area

## Image Data



Enzyme-Linked Immunosorbent Assay (Phospho-ELISA) for Immunogen Phosphopeptide (Phospho-left) and Non-Phosphopeptide (Phospho-right) , using ZFP598 (Phospho-Tyr306) Antibody



Western blot analysis of lysate from Jurkat cells, using phospho-ZFP598 (Phospho-Tyr306) antibody.

## Note

For research use only.