

Product Name: Cyclin D3 (phospho Thr283) Rabbit Polyclonal Antibody
Catalog #: APRab04523

Summary

Production Name	Cyclin D3 (phospho Thr283) Rabbit Polyclonal Antibody
Description	Rabbit Polyclonal Antibody
Host	Rabbit
Application	WB,IHC,ELISA
Reactivity	Human,Mouse,Rat

Performance

Conjugation	Unconjugated
Modification	Phospho Antibody
Isotype	IgG
Clonality	Polyclonal
Form	Liquid
Storage	Store at 4°C short term. Aliquot and store at -20°C long term. Avoid freeze/thaw cycles.
Buffer	Liquid in PBS containing 50% glycerol, 0.5% BSA and 0.02% New type preservative N.
Purification	Affinity purification

Immunogen

Gene Name	CCND3
Alternative Names	CCND3; G1/S-specific cyclin-D3
Gene ID	896.0
SwissProt ID	P30281.The antiserum was produced against synthesized peptide derived from human Cyclin D3 around the phosphorylation site of Thr283. AA range:243-292

Application

Dilution Ratio	WB 1:500 - 1:2000. IHC 1:100 - 1:300. ELISA: 1:5000..
Molecular Weight	32kD

Product Name: Cyclin D3 (phospho Thr283) Rabbit Polyclonal Antibody
Catalog #: APRab04523



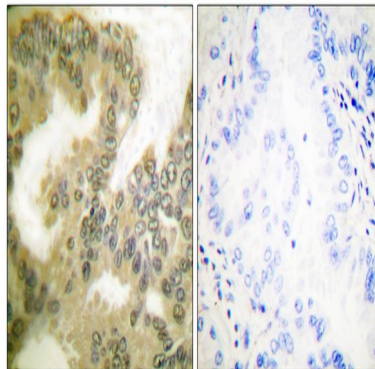
Background

The protein encoded by this gene belongs to the highly conserved cyclin family, whose members are characterized by a dramatic periodicity in protein abundance through the cell cycle. Cyclins function as regulators of CDK kinases. Different cyclins exhibit distinct expression and degradation patterns which contribute to the temporal coordination of each mitotic event. This cyclin forms a complex with and functions as a regulatory subunit of CDK4 or CDK6, whose activity is required for cell cycle G1/S transition. This protein has been shown to interact with and be involved in the phosphorylation of tumor suppressor protein Rb. The CDK4 activity associated with this cyclin was reported to be necessary for cell cycle progression through G2 phase into mitosis after UV radiation. Several transcript variants encoding different isoforms have been found for this gene. [provided by RefSeq, Oct 2008],function:Essential for the control of the cell cycle at the G1/S (start) transition. Potentiates the transcriptional activity of ATF5.,similarity:Belongs to the cyclin family.,similarity:Belongs to the cyclin family. Cyclin D subfamily.,subunit:Interacts with the CDK4 and CDK6 protein kinases to form a serine/threonine kinase holoenzyme complex. The cyclin subunit imparts substrate specificity to the complex. Interacts with ATF5. Interacts with EIF3K.,

Research Area

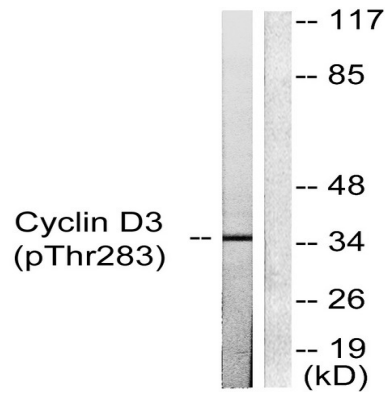
Cell_Cycle_G1S;Cell_Cycle_G2M_DNA;p53;WNT;WNT-T CELLFocal adhesion;Jak_STAT;

Image Data



Immunohistochemistry analysis of paraffin-embedded human lung carcinoma, using Cyclin D3 (Phospho-Thr283) Antibody. The picture on the right is blocked with the phospho peptide.

**Product Name: Cyclin D3 (phospho Thr283) Rabbit
Polyclonal Antibody
Catalog #: APRab04523**



Western blot analysis of lysates from K562 cells treated with UV 5', using Cyclin D3 (Phospho-Thr283) Antibody. The lane on the right is blocked with the phospho peptide.

Note

For research use only.