

Product Name: Csk (phospho Ser364) Rabbit Polyclonal Antibody
Catalog #: APRab04508

Summary

Production Name	Csk (phospho Ser364) Rabbit Polyclonal Antibody
Description	Rabbit Polyclonal Antibody
Host	Rabbit
Application	WB,ELISA
Reactivity	Human,Mouse,Rat

Performance

Conjugation	Unconjugated
Modification	Phospho Antibody
Isotype	IgG
Clonality	Polyclonal
Form	Liquid
Storage	Store at 4°C short term. Aliquot and store at -20°C long term. Avoid freeze/thaw cycles.
Buffer	Liquid in PBS containing 50% glycerol, 0.5% BSA and 0.02% New type preservative N.
Purification	Affinity purification

Immunogen

Gene Name	CSK
Alternative Names	CSK; Tyrosine-protein kinase CSK; C-Src kinase; Protein-tyrosine kinase CYL
Gene ID	1445.0
SwissProt ID	P41240.The antiserum was produced against synthesized peptide derived from human Csk around the phosphorylation site of Ser364. AA range:330-379

Application

Dilution Ratio	WB 1:500 - 1:2000. ELISA: 1:10000
Molecular Weight	55kD

Product Name: Csk (phospho Ser364) Rabbit Polyclonal Antibody
Catalog #: APRab04508



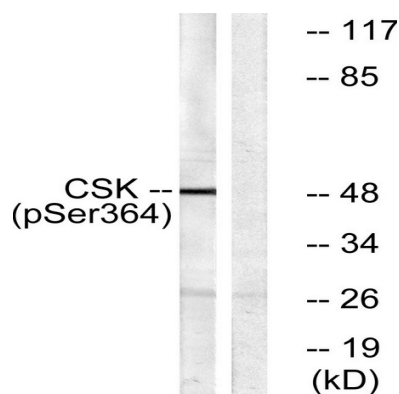
Background

catalytic activity:ATP + a [protein]-L-tyrosine = ADP + a [protein]-L-tyrosine phosphate.,function:Specifically phosphorylates 'Tyr-504' on LCK, which acts as a negative regulatory site. Can also act on the LYN and FYN kinases.,PTM:Autophosphorylation of Tyr-304 occurs only at abnormally high CSK concentrations in vitro.,similarity:Belongs to the protein kinase superfamily. Tyr protein kinase family.,similarity:Belongs to the protein kinase superfamily. Tyr protein kinase family. CSK subfamily.,similarity:Contains 1 protein kinase domain.,similarity:Contains 1 SH2 domain.,similarity:Contains 1 SH3 domain.,subcellular location:Mainly cytoplasmic, also present in lipid rafts.,subunit:Interacts with PTPN8 (By similarity). Interacts with phosphorylated SIT1, PAG1, LIME1 and TGFB111.,tissue specificity:Expressed in lung and macrophages.,catalytic activity:ATP + a [protein]-L-tyrosine = ADP + a [protein]-L-tyrosine phosphate.,function:Specifically phosphorylates 'Tyr-504' on LCK, which acts as a negative regulatory site. Can also act on the LYN and FYN kinases.,PTM:Autophosphorylation of Tyr-304 occurs only at abnormally high CSK concentrations in vitro.,similarity:Belongs to the protein kinase superfamily. Tyr protein kinase family.,similarity:Belongs to the protein kinase superfamily. Tyr protein kinase family. CSK subfamily.,similarity:Contains 1 protein kinase domain.,similarity:Contains 1 SH2 domain.,similarity:Contains 1 SH3 domain.,subcellular location:Mainly cytoplasmic, also present in lipid rafts.,subunit:Interacts with PTPN8 (By similarity). Interacts with phosphorylated SIT1, PAG1, LIME1 and TGFB111.,tissue specificity:Expressed in lung and macrophages.,

Research Area

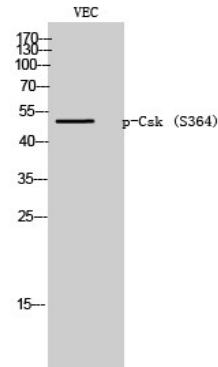
Chemokine;Neurotrophin;Regulates Actin and Cytoskeleton;Epithelial cell signaling in Helicobacter pylori infection;

Image Data



Western blot analysis of lysates from HeLa cells treated with PMA 125ng/ml 30', using Csk (Phospho-Ser364) Antibody.
The lane on the right is blocked with the phospho peptide.

**Product Name: Csk (phospho Ser364) Rabbit Polyclonal
Antibody**
Catalog #: APRab04508



Western Blot analysis of VEC cells using Phospho-Csk (S364) Polyclonal Antibody

Note

For research use only.