

Product Name: Cdc25C (phospho Ser216) Rabbit Polyclonal Antibody
Catalog #: APRab04424

Summary

Production Name	Cdc25C (phospho Ser216) Rabbit Polyclonal Antibody
Description	Rabbit Polyclonal Antibody
Host	Rabbit
Application	IHC, WB,
Reactivity	Human, Rat, Mouse

Performance

Conjugation	Unconjugated
Modification	Phospho Antibody
Isotype	IgG
Clonality	Polyclonal
Form	Liquid
Storage	Store at 4°C short term. Aliquot and store at -20°C long term. Avoid freeze/thaw cycles.
Buffer	Liquid in PBS containing 50% glycerol, 0.5% BSA and 0.02% New type preservative N.
Purification	Affinity purification

Immunogen

Gene Name	CDC25C
Alternative Names	CDC25C; M-phase inducer phosphatase 3; Dual specificity phosphatase Cdc25C
Gene ID	995.0
SwissProt ID	P30307. The antiserum was produced against synthesized peptide derived from human CDC25C around the phosphorylation site of Ser216. AA range:183-232

Application

Dilution Ratio	WB 1:500 - 1:2000. IHC 1:100 - 1:300. ELISA: 1:10000..
Molecular Weight	53kD

Product Name: Cdc25C (phospho Ser216) Rabbit Polyclonal Antibody
Catalog #: APRab04424

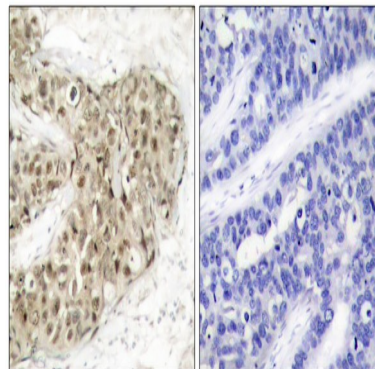
Background

cell division cycle 25C(CDC25C) Homo sapiens This gene encodes a conserved protein that plays a key role in the regulation of cell division. The encoded protein directs dephosphorylation of cyclin B-bound CDC2 and triggers entry into mitosis. It also suppresses p53-induced growth arrest. Multiple alternatively spliced transcript variants of this gene have been described. [provided by RefSeq, Dec 2015],catalytic activity:Protein tyrosine phosphate + H(2)O = protein tyrosine + phosphate.,developmental stage:Expressed predominantly in G2 phase.,function:Functions as a dosage-dependent inducer in mitotic control. It is a tyrosine protein phosphatase required for progression of the cell cycle. It directly dephosphorylates CDC2 and activate its kinase activity.,PTM:Phosphorylated by CHK1 on Ser-216. This phosphorylation creates a binding site for 14-3-3 protein and inhibits the phosphatase.,similarity:Belongs to the MPI phosphatase family.,similarity:Contains 1 rhodanese domain.,subunit:Interacts with HIV-1 Vpr, thereby inactivating CDC25C phosphatase activity.,

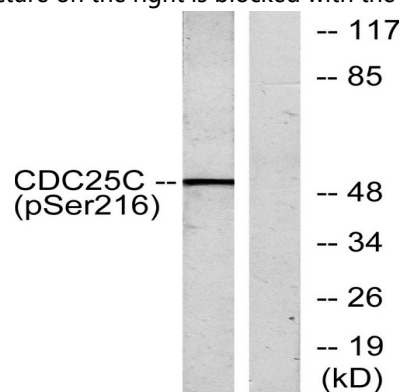
Research Area

Cell_Cycle_G1S;Cell_Cycle_G2M_DNA;Oocyte meiosis;Progesterone-mediated oocyte maturation;

Image Data



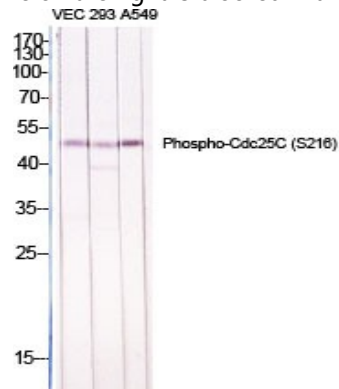
Immunohistochemistry analysis of paraffin-embedded human breast carcinoma, using CDC25C (Phospho-Ser216) Antibody. The picture on the right is blocked with the phospho peptide.



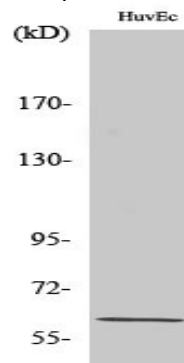
Western blot analysis of lysates from HUVEC cells treated with serum 20% 30', using CDC25C (Phospho-Ser216)

Product Name: Cdc25C (phospho Ser216) Rabbit Polyclonal Antibody
Catalog #: APRab04424

Antibody. The lane on the right is blocked with the phospho peptide.



Western Blot analysis of various cells using Phospho-Cdc25C (S216) Polyclonal Antibody diluted at 1 : 1000



Western Blot analysis of HuvEc cells using Phospho-Cdc25C (S216) Polyclonal Antibody diluted at 1 : 1000

Note

For research use only.