

Product Name: HIF1 alpha Rabbit Polyclonal Antibody
Catalog #: APRab03830



Summary

Production Name	HIF1 alpha Rabbit Polyclonal Antibody
Description	Primary antibody
Host	Rabbit
Application	WB,IHC-F,IHC-P,ICC/IF,ELISA
Reactivity	Human,Mouse,Rat

Performance

Conjugation	Unconjugated
Modification	Unmodified
Isotype	IgG
Clonality	Polyclonal Antibody
Form	Liquid
Storage	Store at 4°C short term. Aliquot and store at -20°C long term. Avoid freeze/thaw cycles.
Buffer	Liquid in PBS containing 50% glycerol, 0.5% BSA and 0.02% sodium azide, pH 7.3.
Purification	Affinity Purified

Immunogen

Gene Name	HIF1A
Alternative Names	HIF1A; BHLHE78; MOP1; PASD8; Hypoxia-inducible factor 1-alpha; HIF-1-alpha; HIF1-alpha; ARNT-interacting protein; Basic-helix-loop-helix-PAS protein MOP1; Class E basic helix-loop-helix protein 78; bHLHe78; Member of PAS protein 1; PAS doma
Gene ID	3091
SwissProt ID	Q16665

Application

Dilution Ratio	WB: 1/500-1/1000 IHC: 1/50-1/100 IF: 1/50-1/200 ELISA: 1/10000
Molecular Weight	Calculated MW: 93 kDa; Observed MW: 92-130 kDa

Product Name: HIF1 alpha Rabbit Polyclonal Antibody
Catalog #: APRab03830



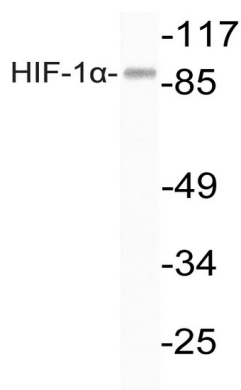
Background

Hypoxia-inducible factor-1 (HIF1) is a transcription factor found in mammalian cells cultured under reduced oxygen tension that plays an essential role in cellular and systemic homeostatic responses to hypoxia. HIF1 is a heterodimer composed of an alpha subunit and a beta subunit. The beta subunit has been identified as the aryl hydrocarbon receptor nuclear translocator (ARNT). This gene encodes the alpha subunit of HIF-1.

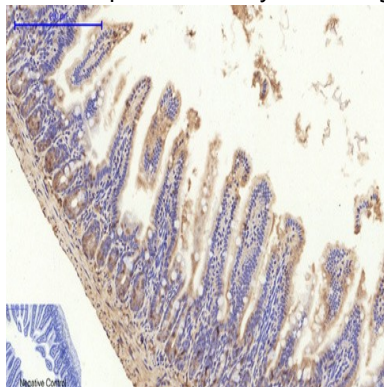
Research Area

Cardiovascular

Image Data

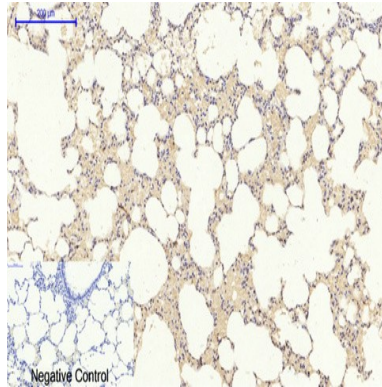


Western blot analysis of HIF1 alpha in LOVO lysates using HIF1 alpha antibody.



Immunohistochemistry analysis of paraffin-embedded mouse colon tissue using HIF1 alpha antibody. High-pressure and temperature Sodium Citrate pH 6.0 was used for antigen retrieval.

Product Name: HIF1 alpha Rabbit Polyclonal Antibody
Catalog #: APRab03830



Immunohistochemistry analysis of paraffin-embedded rat lung tissue using HIF1 alpha antibody. High-pressure and temperature Sodium Citrate pH 6.0 was used for antigen retrieval.

Note

For research use only.