

Summary

Production Name	Smad2/3 Rabbit Polyclonal Antibody
Description	Primary antibody
Host	Rabbit
Application	WB,ICC/IF,FC,IP,ChIP
Reactivity	Human,Mouse,Rat

Performance

Conjugation	Unconjugated
Modification	Unmodified
Isotype	IgG
Clonality	Polyclonal Antibody
Form	Liquid
Storage	Store at 4°C short term. Aliquot and store at -20°C long term. Avoid freeze/thaw cycles.
Buffer	50mM Tris-Glycine(pH 7.4), 0.15M NaCl, 40% Glycerol, 0.01% Sodium azide and 0.05% BSA
Purification	Affinity Purified

Immunogen

Gene Name	SMAD2 SMAD2; MADH2; MADR2; MAD homolog 2; M hMAD-2; SMAD family member 2;
Alternative Names	SMAD 2; Smad2; hSMAD2;SMAD3; MADH3; hMAD-3; JV15-2; SMAD family member 3; SMAD 3; Smad3; hSMAD3;smad2/3;smad2+3
Gene ID	4087
SwissProt ID	Q15796

Application

Dilution Ratio	WB: 1/500-1/1000 IF: 1/50-1/200 IP: 1/20 FC: 1/50-1/100 ChIP: 1/20
Molecular Weight	Calculated MW: 52 kDa; Observed MW: 52,60 kDa

Product Name: Smad2/3 Rabbit Polyclonal Antibody
Catalog #: APRab01392



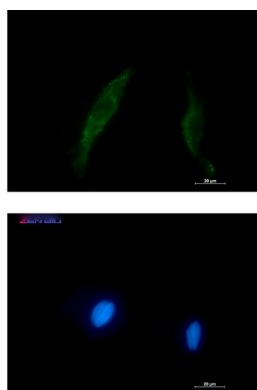
Background

The protein encoded by this gene belongs to the SMAD, a family of proteins similar to the gene products of the Drosophila gene 'mothers against decapentaplegic' (Mad) and the C. elegans gene Sma. SMAD proteins are signal transducers and transcriptional modulators that mediate multiple signaling pathways.

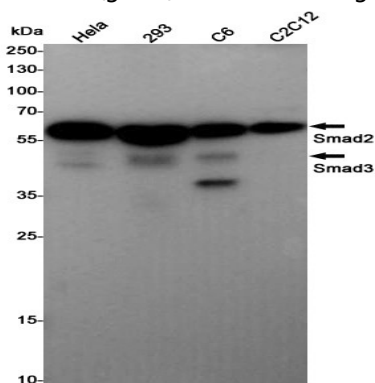
Research Area

Signal Transduction

Image Data



Immunocytochemistry analysis of Smad2/3 (green) in HT-1080 using Smad2/3 antibody, and DAPI (blue).



Western blot analysis of Smad2/3 in HeLa, 293, C6, C2C12 lysates using Smad2/3 antibody.

Note

For research use only.