

---

## Summary

<b>Production Name</b>	YY1 Rabbit Polyclonal Antibody
<b>Description</b>	Primary antibody
<b>Host</b>	Rabbit
<b>Application</b>	WB,IHC-P,ICC/IF,IP
<b>Reactivity</b>	Human,Mouse,Rat

## Performance

<b>Conjugation</b>	Unconjugated
<b>Modification</b>	Unmodified
<b>Isotype</b>	IgG
<b>Clonality</b>	Polyclonal Antibody
<b>Form</b>	Liquid
<b>Storage</b>	Store at 4°C short term. Aliquot and store at -20°C long term. Avoid freeze/thaw cycles.
<b>Buffer</b>	Rabbit IgG in phosphate buffered saline , pH 7.4, 150mM NaCl, 0.02% sodium azide and 50% glycerol.
<b>Purification</b>	Affinity Chromatography

## Immunogen

<b>Gene Name</b>	YY1
<b>Alternative Names</b>	YY1; Delta transcription factor; INO80 complex subunit S; NF-E1; Yin and yang 1; YY-1
<b>Gene ID</b>	7528
<b>SwissProt ID</b>	P25490

## Application

<b>Dilution Ratio</b>	WB: 1/500-1/1000 IHC: 1/50-1/100 IF: 1/50-1/200 IP: 1/20
<b>Molecular Weight</b>	Calculated MW: 45 kDa; Observed MW: 68 kDa

## Background

---

**Product Name: YY1 Rabbit Polyclonal Antibody**  
**Catalog #: APRab01322**

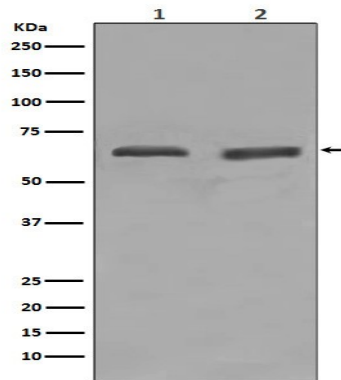


Its activity is regulated by transcription factors and cytoplasmic proteins that have been shown to abrogate or completely inhibit YY1-mediated activation or repression. For example, it acts as a repressor in absence of adenovirus E1A protein but as an activator in its presence. Acts synergistically with the SMAD1 and SMAD4 in bone morphogenetic protein (BMP)-mediated cardiac-specific gene expression.

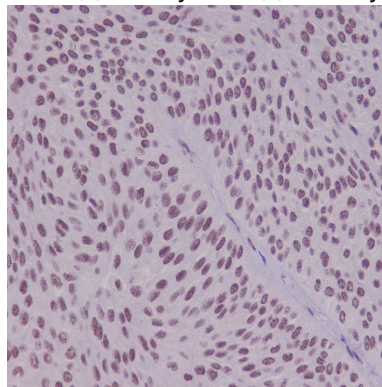
## Research Area

Epigenetics and Nuclear Signaling

## Image Data

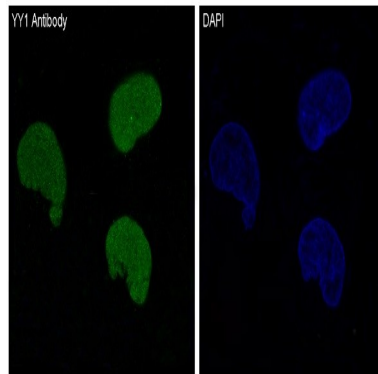


Western blot analysis of YY1 in (1) HeLa lysates; (2) Daudi lysates using YY1 antibody.



Immunohistochemistry analysis of paraffin-embedded Human bladder using YY1 antibody. High-pressure and temperature Sodium Citrate pH 6.0 was used for antigen retrieval.

**Product Name: YY1 Rabbit Polyclonal Antibody**  
**Catalog #: APRab01322**



Immunofluorescence analysis of YY1 in HeLa using YY1 antibody.

**Note**

For research use only.