

**Product Name: Phospho-TGF beta Receptor I (Ser165)
Rabbit Polyclonal Antibody
Catalog #: APRab00956**



Summary

Production Name	Phospho-TGF beta Receptor I (Ser165) Rabbit Polyclonal Antibody
Description	Primary antibody
Host	Rabbit
Application	WB,IHC-P,ICC/IF,ELISA
Reactivity	Human,Mouse,Rat

Performance

Conjugation	Unconjugated
Modification	Phosphorylated
Isotype	IgG
Clonality	Polyclonal Antibody
Form	Liquid
Storage	Store at 4°C short term. Aliquot and store at -20°C long term. Avoid freeze/thaw cycles.
Buffer	Liquid in PBS containing 50% glycerol, 0.5% BSA and 0.02% sodium azide, pH 7.3.
Purification	Affinity Purified

Immunogen

Gene Name	TGFBR1 TGFBR1; ALK5; SKR4; TGF-beta receptor type-1; TGFR-1; Activin A receptor type II-like
Alternative Names	protein kinase of 53kD; Activin receptor-like kinase 5; ALK-5; ALK5; Serine/threonine-protein kinase receptor R4; SKR4; TGF-beta type I receptor; Transfor
Gene ID	7046
SwissProt ID	P36897

Application

Dilution Ratio	WB: 1/500-1/1000 IHC: 1/50-1/100 ICC: 1/100-1/200 ELISA: 1/10000
Molecular Weight	Calculated MW: 56 kDa; Observed MW: 56 kDa

**Product Name: Phospho-TGF beta Receptor I (Ser165)
Rabbit Polyclonal Antibody
Catalog #: APRab00956**



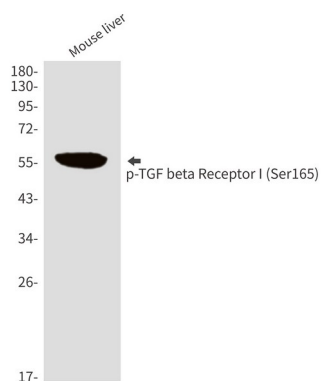
Background

The protein encoded by this gene forms a heteromeric complex with type II TGF-beta receptors when bound to TGF-beta, transducing the TGF-beta signal from the cell surface to the cytoplasm. The encoded protein is a serine/threonine protein kinase.

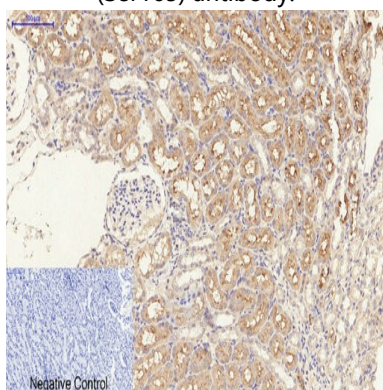
Research Area

Cardiovascular

Image Data

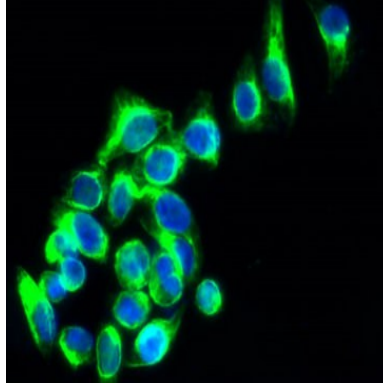


Western blot analysis of Phospho-TGF beta Receptor I (Ser165) in mouse liver lysates using Phospho-TGF beta Receptor I (Ser165) antibody.



Immunohistochemistry analysis of paraffin-embedded rat kidney tissue using Phospho-TGF beta Receptor I (Ser165) antibody. High-pressure and temperature Sodium Citrate pH 6.0 was used for antigen retrieval.

**Product Name: Phospho-TGF beta Receptor I (Ser165)
Rabbit Polyclonal Antibody
Catalog #: APRab00956**



Immunofluorescence analysis of Phospho-TGF beta Receptor I (Ser165) in HepG2 cells using Phospho-TGF beta Receptor I (Ser165) antibody(green).

Note

For research use only.