

**Product Name: Phospho-CD31 (Tyr713) Rabbit Polyclonal Antibody**  
**Catalog #: APRab00842**

---

## Summary

<b>Production Name</b>	Phospho-CD31 (Tyr713) Rabbit Polyclonal Antibody
<b>Description</b>	Primary antibody
<b>Host</b>	Rabbit
<b>Application</b>	WB,IHC-F,IHC-P,ICC/IF,ELISA
<b>Reactivity</b>	Human,Mouse

## Performance

<b>Conjugation</b>	Unconjugated
<b>Modification</b>	Phosphorylated
<b>Isotype</b>	IgG
<b>Clonality</b>	Polyclonal Antibody
<b>Form</b>	Liquid
<b>Storage</b>	Store at 4°C short term. Aliquot and store at -20°C long term. Avoid freeze/thaw cycles.
<b>Buffer</b>	Liquid in PBS containing 50% glycerol, 0.5% BSA and 0.02% sodium azide, pH 7.3.
<b>Purification</b>	Affinity Chromatography

## Immunogen

<b>Gene Name</b>	PECAM1
<b>Alternative Names</b>	Platelet endothelial cell adhesion molecule; PECAM-1; EndoCAM; GPIIA <sup>i</sup> ; PECA1; CD antigen CD31
<b>Gene ID</b>	5175
<b>SwissProt ID</b>	P16284

## Application

<b>Dilution Ratio</b>	WB: 1/500-1/1000 IHC: 1/50-1/100 IF: 1/50-1/200 ELISA: 1/10000
<b>Molecular Weight</b>	Calculated MW: 83 kDa; Observed MW: 150 kDa

**Product Name: Phospho-CD31 (Tyr713) Rabbit Polyclonal Antibody**  
**Catalog #: APRab00842**

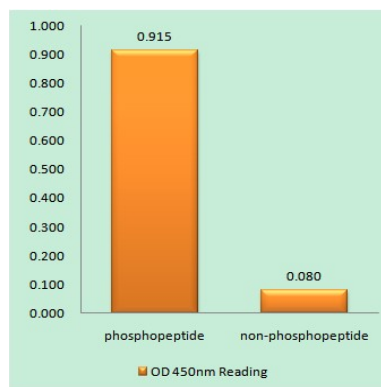
## Background

PECAM-1 a cell adhesion molecule expressed on platelets and at endothelial cell intercellular junctions. Plays a role in modulation of integrin-mediated cell adhesion, transendothelial migration, angiogenesis, apoptosis, cell migration, negative regulation of immune cell signaling, autoimmunity, macrophage phagocytosis, IgE-mediated anaphylaxis and thrombosis. Undergoes alternative splicing, generating multiple isoforms in vascular beds of various tissues.

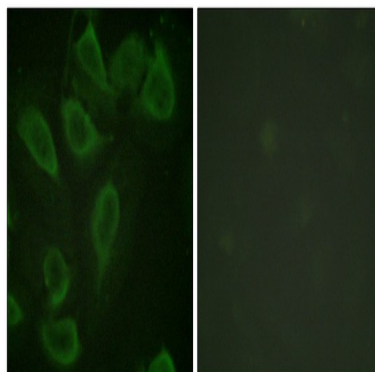
## Research Area

Cardiovascular

## Image Data

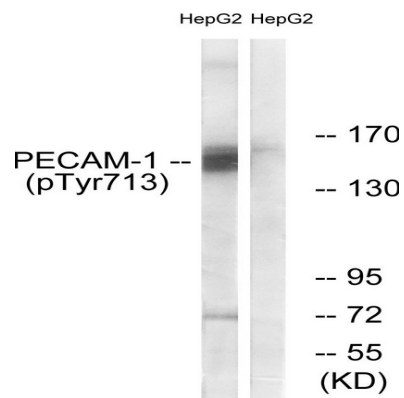


EnzymeLinked Immunosorbent Assay (Phospho-ELISA) for Immunogen Phospho-peptide (Phospho-left) and NonPhospho-peptide (Phospho-right), using PECAM1 (Phospho-Tyr71antibody



Immunofluorescence analysis of Phospho-CD31 (Tyr713) in HeLa using Phospho-CD31 (Tyr713) antibody. The picture on the right is blocked with the Phospho- peptide.

**Product Name: Phospho-CD31 (Tyr713) Rabbit  
Polyclonal Antibody  
Catalog #: APRab00842**



Western blot analysis of Phospho-CD31 (Tyr713) in HepG2 lysates using Phospho-CD31 (Tyr713) antibody. The lane on the right is blocked with the Phospho-peptide.

### Note

For research use only.