

**Product Name: Integrin alpha 3 Rabbit Polyclonal Antibody**  
**Catalog #: APRab00576**

---

## Summary

|                        |   |
|------------------------|---|
| <b>Production Name</b> | Integrin alpha 3 Rabbit Polyclonal Antibody |
| <b>Description</b>     | Primary antibody                            |
| <b>Host</b>            | Rabbit                                      |
| <b>Application</b>     | WB,IHC-P,ELISA                              |
| <b>Reactivity</b>      | Human,Mouse,Rat                             |

## Performance

|                     |  |
|---------------------|--|
| <b>Conjugation</b>  | Unconjugated   |
| <b>Modification</b> | Unmodified   |
| <b>Isotype</b>      | IgG  |
| <b>Clonality</b>    | Polyclonal Antibody  |
| <b>Form</b>         | Liquid   |
| <b>Storage</b>      | Store at 4°C short term. Aliquot and store at -20°C long term. Avoid freeze/thaw cycles. |
| <b>Buffer</b>       | Liquid in PBS containing 50% glycerol, 0.5% BSA and 0.02% sodium azide, pH 7.3.          |
| <b>Purification</b> | Affinity Purified  |

## Immunogen

|                          |  |
|--------------------------|--|
| <b>Gene Name</b>         | ITGA3  |
| <b>Alternative Names</b> | ITGA3; MSK18; Integrin alpha-3; CD49 antigen-like family member C; FRP-2; Galactoprotein B3; GAPB3; VLA-3 subunit alpha; CD49c |
| <b>Gene ID</b>           | 3675   |
| <b>SwissProt ID</b>      | P26006   |

## Application

|                         |   |
|-------------------------|---|
| <b>Dilution Ratio</b>   | WB: 1/500-1/1000 IHC: 1/50-1/100 ELISA: 1/10000 |
| <b>Molecular Weight</b> | Calculated MW: 117 kDa; Observed MW: 117 kDa    |

**Product Name: Integrin alpha 3 Rabbit Polyclonal Antibody**  
**Catalog #: APRab00576**

---

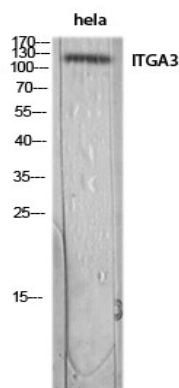
## Background

Integrin alpha-3/beta-1 is a receptor for fibronectin, laminin, collagen, epiligrin, thrombospondin and CSPG4.

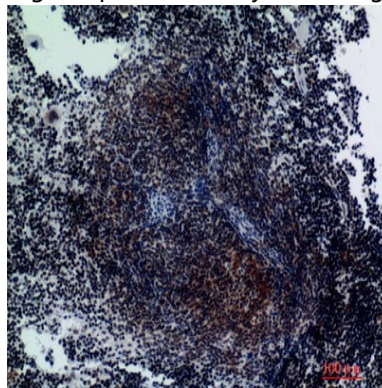
## Research Area

Signal Transduction

## Image Data



Western blot analysis of Integrin alpha 3 in hela lysates using Integrin alpha 3 antibody.



Immunohistochemistry analysis of paraffin-embedded mouse spleen using Integrin alpha 3 antibody. High-pressure and temperature Sodium Citrate pH 6.0 was used for antigen retrieval.

## Note

For research use only.