

**Product Name: Inhibin beta E Rabbit Polyclonal Antibody**  
**Catalog #: APRab00474**

---

## Summary

<b>Production Name</b>	Inhibin beta E Rabbit Polyclonal Antibody
<b>Description</b>	Primary antibody
<b>Host</b>	Rabbit
<b>Application</b>	WB,IHC-P,ELISA
<b>Reactivity</b>	Human,Mouse,Rat

## Performance

<b>Conjugation</b>	Unconjugated
<b>Modification</b>	Unmodified
<b>Isotype</b>	IgG
<b>Clonality</b>	Polyclonal Antibody
<b>Form</b>	Liquid
<b>Storage</b>	Store at 4°C short term. Aliquot and store at -20°C long term. Avoid freeze/thaw cycles.
<b>Buffer</b>	Liquid in PBS containing 50% glycerol, 0.5% BSA and 0.02% sodium azide, pH 7.3.
<b>Purification</b>	Affinity Purified

## Immunogen

<b>Gene Name</b>	INHBE
<b>Alternative Names</b>	INHBE; Inhibin beta E chain; Activin beta-E chain
<b>Gene ID</b>	83729
<b>SwissProt ID</b>	P58166

## Application

<b>Dilution Ratio</b>	WB: 1/500-1/1000 IHC: 1/50-1/100 ELISA: 1/10000
<b>Molecular Weight</b>	Calculated MW: 39 kDa; Observed MW: 39 kDa

## Background

---

**Product Name: Inhibin beta E Rabbit Polyclonal Antibody**  
**Catalog #: APRab00474**

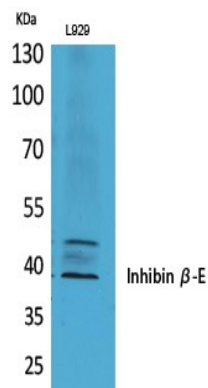


Inhibins and activins inhibit and activate, respectively, the secretion of follitropin by the pituitary gland.

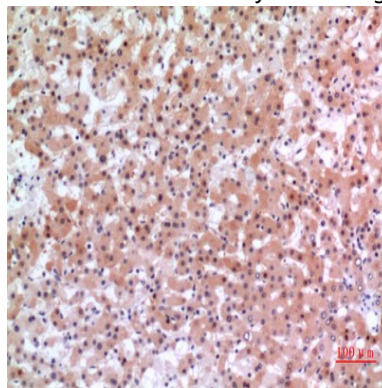
## Research Area

Signal Transduction

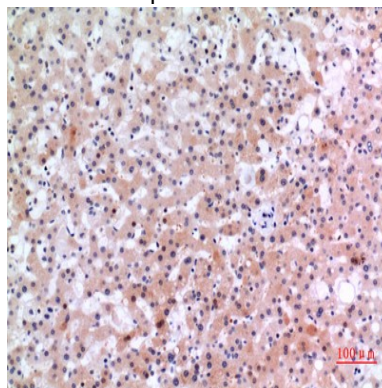
## Image Data



Western blot analysis of Inhibin beta E in L929 lysates using Inhibin beta E antibody.



Immunohistochemistry analysis of paraffin-embedded Human liver using Inhibin beta E antibody. High-pressure and temperature Sodium Citrate pH 6.0 was used for antigen retrieval.

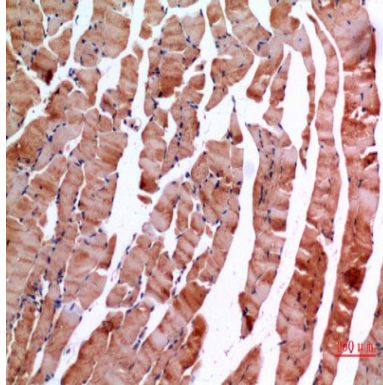


Immunohistochemistry analysis of paraffin-embedded Human liver using Inhibin beta E antibody. High-pressure and

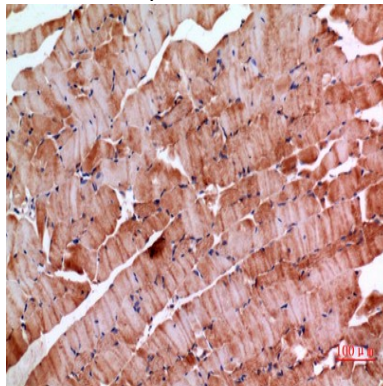
**Product Name: Inhibin beta E Rabbit Polyclonal  
Antibody**  
**Catalog #: APRab00474**



temperature Sodium Citrate pH 6.0 was used for antigen retrieval.



Immunohistochemistry analysis of paraffin-embedded mouse muscle using Inhibin beta E antibody. High-pressure and temperature Sodium Citrate pH 6.0 was used for antigen retrieval.



Immunohistochemistry analysis of paraffin-embedded mouse muscle using Inhibin beta E antibody. High-pressure and temperature Sodium Citrate pH 6.0 was used for antigen retrieval.

## **Note**

For research use only.