

Product Name: Hormone Sensitive Lipase Rabbit Polyclonal Antibody
Catalog #: APRab00464

Summary

Production Name	Hormone Sensitive Lipase Rabbit Polyclonal Antibody
Description	Primary antibody
Host	Rabbit
Application	WB,IHC-P,ELISA
Reactivity	Human,Mouse,Rat

Performance

Conjugation	Unconjugated
Modification	Unmodified
Isotype	IgG
Clonality	Polyclonal Antibody
Form	Liquid
Storage	Store at 4°C short term. Aliquot and store at -20°C long term. Avoid freeze/thaw cycles.
Buffer	Liquid in PBS containing 50% glycerol, 0.5% BSA and 0.02% sodium azide, pH 7.3.
Purification	Affinity Chromatography

Immunogen

Gene Name	LIPE
Alternative Names	LIPE; Hormone-sensitive lipase; HSL
Gene ID	3991
SwissProt ID	Q05469

Application

Dilution Ratio	WB: 1/500-1/1000 IHC: 1/50-1/100 ELISA: 1/10000
Molecular Weight	Calculated MW: 117 kDa; Observed MW: 120 kDa

Background

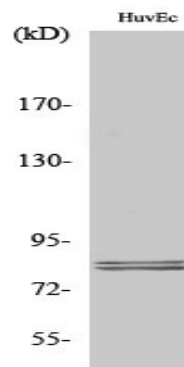
**Product Name: Hormone Sensitive Lipase Rabbit
Polyclonal Antibody
Catalog #: APRab00464**

hormone sensitive lipase is a lipolytic enzyme of the 'GDXG' family. Plays a rate limiting step in triglyceride lipolysis. In adipose tissue and heart, it primarily hydrolyzes stored triglycerides to free fatty acids, while in steroidogenic tissues, it principally converts cholesteryl esters to free cholesterol for steroid hormone production.

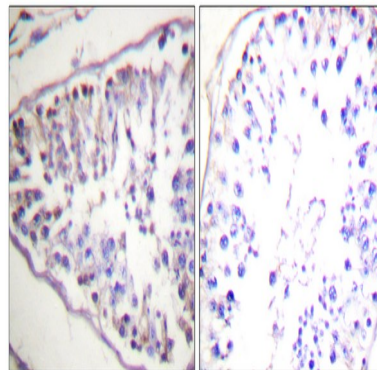
Research Area

Cardiovascular

Image Data

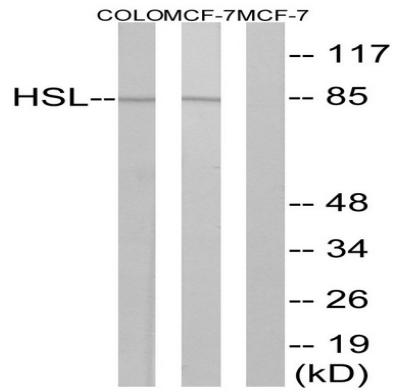


Western blot analysis of Hormone Sensitive Lipase in various lysates using Hormone Sensitive Lipase antibody.



Immunohistochemistry analysis of paraffin-embedded Human tonsil tissue, using HSL antibody. High-pressure and temperature Sodium Citrate pH 6.0 was used for antigen retrieval. Sample with blocking peptide on the right.

**Product Name: Hormone Sensitive Lipase Rabbit
Polyclonal Antibody
Catalog #: APRab00464**



Western blot analysis of Hormone Sensitive Lipase in COLO and MCF-7 lysates using HSL antibody. The lane on the right is blocked with the synthesized peptide.

Note

For research use only.