

**Product Name: Bovine Serum Albumin Rabbit Polyclonal Antibody**  
**Catalog #: APRab00436**

---

## Summary

|                        |   |
|------------------------|---|
| <b>Production Name</b> | Bovine Serum Albumin Rabbit Polyclonal Antibody |
| <b>Description</b>     | Primary antibody                                |
| <b>Host</b>            | Rabbit  |
| <b>Application</b>     | WB,ELISA  |
| <b>Reactivity</b>      | Bovine  |

## Performance

|                     |  |
|---------------------|--|
| <b>Conjugation</b>  | Unconjugated   |
| <b>Modification</b> | Unmodified   |
| <b>Isotype</b>      | IgG  |
| <b>Clonality</b>    | Polyclonal Antibody  |
| <b>Form</b>         | Liquid   |
| <b>Storage</b>      | Store at 4°C short term. Aliquot and store at -20°C long term. Avoid freeze/thaw cycles. |
| <b>Buffer</b>       | Liquid in PBS containing 50% glycerol, 0.5% BSA and 0.02% sodium azide, pH 7.3.          |
| <b>Purification</b> | Affinity Purified  |

## Immunogen

|                          |  |
|--------------------------|--|
| <b>Gene Name</b>         | Alb  |
| <b>Alternative Names</b> | BSA; ALB; Albumin; HSA; PRO0883; Serum Albumin |
| <b>Gene ID</b>           | 280717.0                                       |
| <b>SwissProt ID</b>      | P02769   |

## Application

|                         |  |
|-------------------------|--|
| <b>Dilution Ratio</b>   | WB: 1/500-1/1000 ELISA: 1/10000            |
| <b>Molecular Weight</b> | Calculated MW: 69 kDa; Observed MW: 66 kDa |

## Background

---

**Product Name: Bovine Serum Albumin Rabbit Polyclonal Antibody**  
**Catalog #: APRab00436**

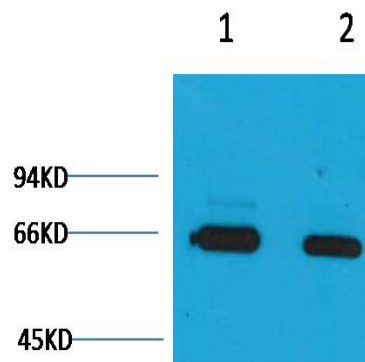
---

Serum albumin, the main protein of plasma, has a good binding capacity for water, Ca<sup>2+</sup>, Na<sup>+</sup>, K<sup>+</sup>, fatty acids, hormones, bilirubin and drugs. Its main function is the regulation of the colloidal osmotic pressure of blood. Major zinc transporter in plasma, typically binds about 80% of all plasma zinc.

## Research Area

Cardiovascular

## Image Data



Western blot analysis of Bovine Serum Albumin in Bovine Serum Albumin lysates using Bovine Serum Albumin antibody.

## Note

For research use only.