

Summary

| | |
|------------------------|--------------------------------------|
| Production Name | TGF alpha Rabbit Polyclonal Antibody |
| Description | Primary antibody |
| Host | Rabbit |
| Application | WB,IHC-P,ICC/IF,IP |
| Reactivity | Human |

Performance

| | |
|---------------------|--|
| Conjugation | Unconjugated |
| Modification | Unmodified |
| Isotype | IgG |
| Clonality | Polyclonal Antibody |
| Form | Liquid |
| Storage | Store at 4°C short term. Aliquot and store at -20°C long term. Avoid freeze/thaw cycles. |
| Buffer | Rabbit IgG in phosphate buffered saline , pH 7.4, 150mM NaCl, 0.02% sodium azide and 50% glycerol. |
| Purification | Affinity Chromatography |

Immunogen

| | |
|--------------------------|--|
| Gene Name | TGFA |
| Alternative Names | ETGF; TFGA; TGF A; TGF-alpha; Tgfa; Wa1; Waved 1 |
| Gene ID | 7039 |
| SwissProt ID | P01135 |

Application

| | |
|-------------------------|--|
| Dilution Ratio | WB: 1/500-1/1000 IHC: 1/50-1/100 IF: 1/50-1/200 IP: 1/20 |
| Molecular Weight | Calculated MW: 17 kDa; Observed MW: 17 kDa |

Background

Product Name: TGF alpha Rabbit Polyclonal Antibody
Catalog #: APRab00301

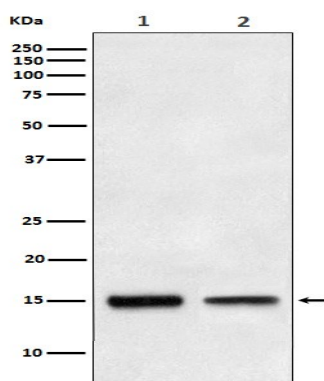


TGF alpha is a mitogenic polypeptide that is able to bind to the EGF receptor and to act synergistically with TGF beta to promote anchorage-independent cell proliferation in soft agar.

Research Area

Cardiovascular

Image Data



Western blot analysis of TGF alpha in (1) HepG2 lysates; (2) Human fetal liver lysates using TGF alpha antibody.

Note

For research use only.