

Summary

Production Name	LMO2 Rabbit Polyclonal Antibody
Description	Primary antibody
Host	Rabbit
Application	WB,FC,IP
Reactivity	Human,Mouse,Rat

Performance

Conjugation	Unconjugated
Modification	Unmodified
Isotype	IgG
Clonality	Polyclonal Antibody
Form	Liquid
Storage	Store at 4°C short term. Aliquot and store at -20°C long term. Avoid freeze/thaw cycles.
Buffer	Rabbit IgG in phosphate buffered saline , pH 7.4, 150mM NaCl, 0.02% sodium azide and 50% glycerol.
Purification	Affinity Chromatography

Immunogen

Gene Name	LMO2
Alternative Names	TTG2; LMO-2; RBTN2; RHOM2; RBTNL1
Gene ID	4005
SwissProt ID	P25791

Application

Dilution Ratio	WB: 1/500-1/1000 IP: 1/20 FC: 1/50-1/100
Molecular Weight	Calculated MW: 18 kDa; Observed MW: 18 kDa

Background

Product Name: LMO2 Rabbit Polyclonal Antibody
Catalog #: APRab00208

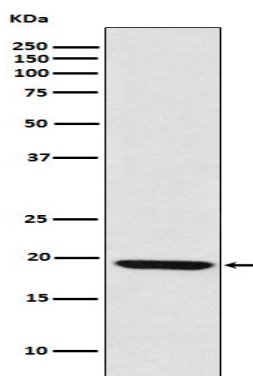


Acts with TAL1/SCL to regulate red blood cell development. Also acts with LDB1 to maintain erythroid precursors in an immature state.

Research Area

Cardiovascular

Image Data



Western blot analysis of LMO2 in Raji lysates using LMO2 antibody.

Note

For research use only.